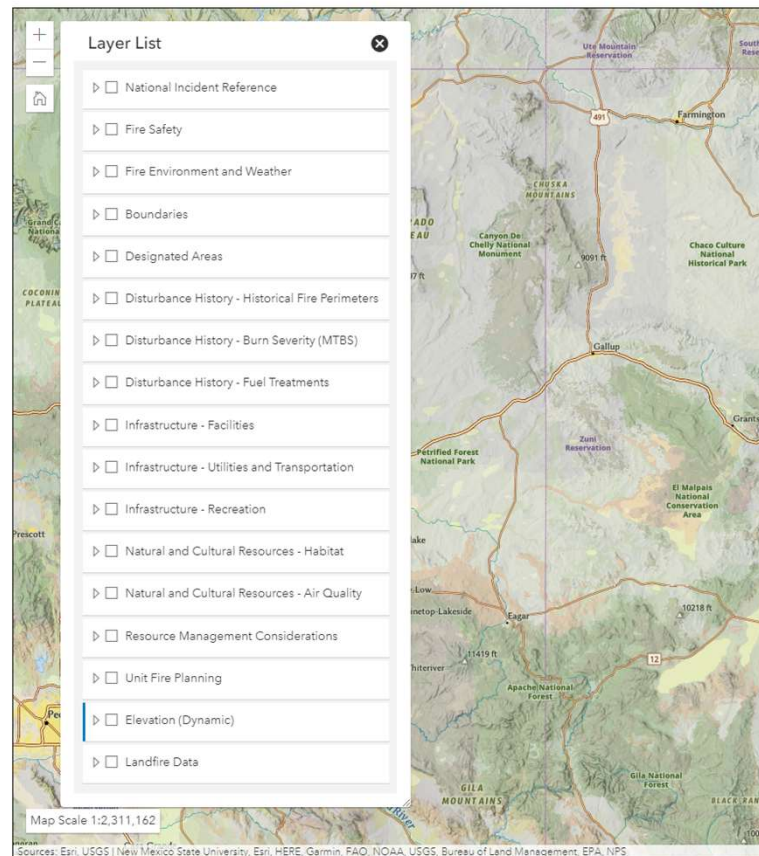


# WFDSS Next Gen

MAP LAYERS FOCUS GROUP 4

# WFDSS Next Gen - LAYER CATEGORIES

## Incidents



# WFDSS Next Gen – Select the top layer box to enable the layers chosen in the group below

My Home Incidents Analysis Reports Resources Contact Us

## Incidents

+

-

5

Layer List

☐ National Incident Reference

☒ Current Year Fire Points (IRWIN) ...

☐ Drop Points (NIFS) ...

☐ Division and Branch Breaks (NIFS) ...

☐ Active Fire Edge and Contained Line (NIFS) ...

☒ Fire Perimeters - Cooperators (NIFS) ...

☒ National Infrared Operations (NIROPS)

☐ Fire Safety

☐ Fire Environment and Weather

☐ Boundaries

☐ Designated Areas

☐ Disturbance History - Historical Fire Perimeters

☐ Disturbance History - Burn Severity (MTBS)

☐ Disturbance History - Fuel Treatments

☐ Infrastructure - Facilities

☐ Infrastructure - Utilities and Transportation

☐ Infrastructure - Recreation

☐ Natural and Cultural Resources - Habitat

Sources: Esri, USGS | New Mexico State University, Esri, HERE, Garmin, FAO, NOAA, USGS, Bureau of Land Management, EPA, NPS

Check top layer

Turns on layers  
chosen below

My Home Incidents Analysis Reports Resources Contact Us

## Incidents

+

-

5

Layer List

☒ National Incident Reference

☒ Current Year Fire Points (IRWIN) ...

☐ Drop Points (NIFS) ...

☐ Division and Branch Breaks (NIFS) ...

☐ Active Fire Edge and Contained Line (NIFS) ...

☒ Fire Perimeters - Cooperators (NIFS) ...

☒ National Infrared Operations (NIROPS)

☐ Fire Safety

☐ Fire Environment and Weather

☐ Boundaries

☐ Designated Areas

☐ Disturbance History - Historical Fire Perimeters

☐ Disturbance History - Burn Severity (MTBS)

☐ Disturbance History - Fuel Treatments

☐ Infrastructure - Facilities

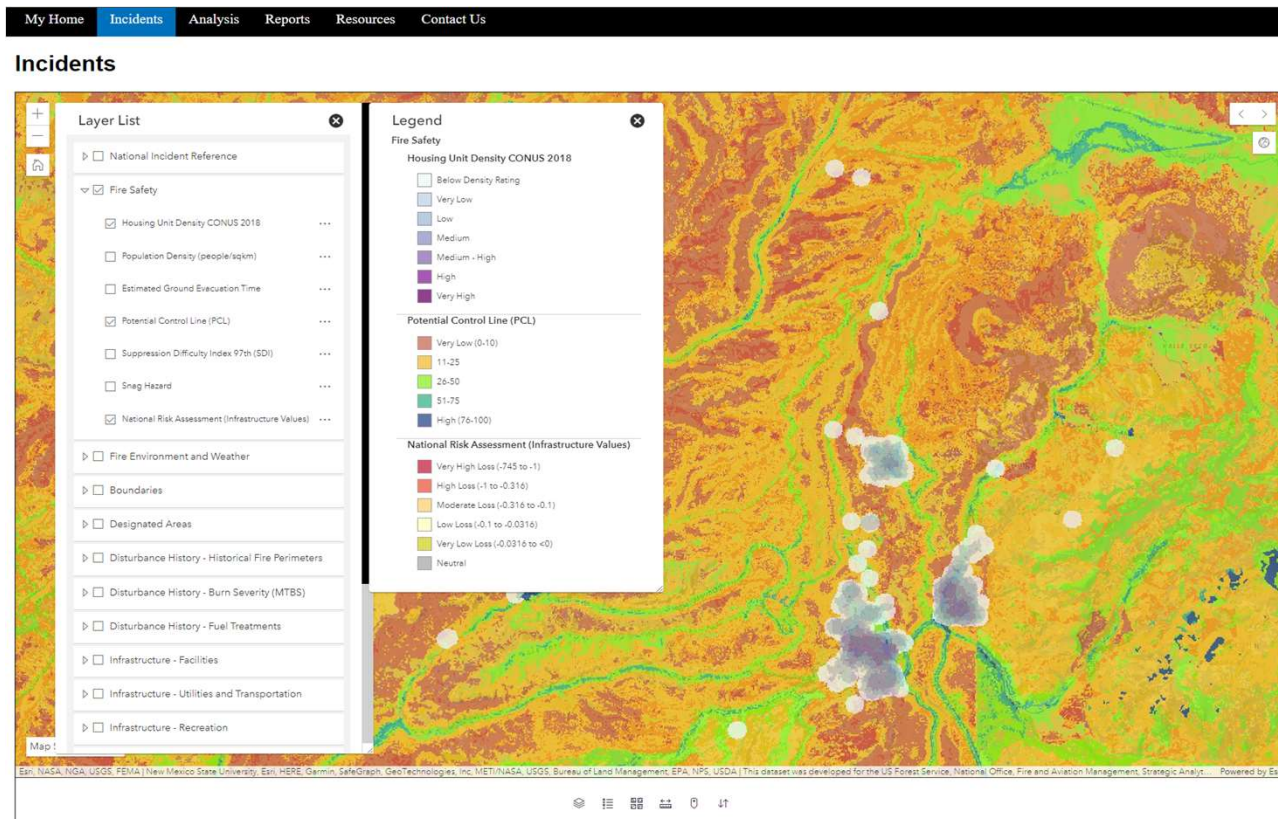
☐ Infrastructure - Utilities and Transportation

☐ Infrastructure - Recreation

☐ Natural and Cultural Resources - Habitat

Sources: Esri, USGS | New Mexico State University, Esri, HERE, Garmin, FAO, NOAA, USGS, Bureau of Land Management, EPA, NPS

WFDSS Next Gen – Legends are available from the toolbar below the map. Legends will display multiple layers at one time. There will be many layers you have seen in the Risk Management Dashboard, WFAS, and WildfireSAFE.





WFDSS Next Gen – Where are the fire behavior modeling results?  
They are visible from within the Incident Dashboard. New analyses can be requested/created from this view.

My Home Incidents Analysis Reports Resources Contact Us GA Preparedness Level: XX | National Preparedness Level: X

Moose Incident Log

Incident Info Analysis Relative Risk Strategy Elaborations OA Rationale Periodic Assessment MORs

Map Scale 1:144,448

Map Data: Esri, NASA, NOAA, USGS, Esri, HERE, Garmin, SafeGraph, GeoTechnologies, Inc., METI/NASA, USGS, Bureau of Land Management, EPA, NPS, USDA. Powered by Esri.

Choose an Analysis Type

- ☐ FlamMap (Basic)
- ☐ MTT (ShortTerm)
- ☐ FARSITE (NearTerm)
- ☐ FSPro

CREATE ANALYSIS REQUEST ANALYSIS

# WFDSS Next Gen – Fire behavior model analyses are visible from within the incident content.

My Home Incidents Analysis Reports Resources Contact Us GA Preparedness Level: XX | National Preparedness Level: XX

Moose Incident Log

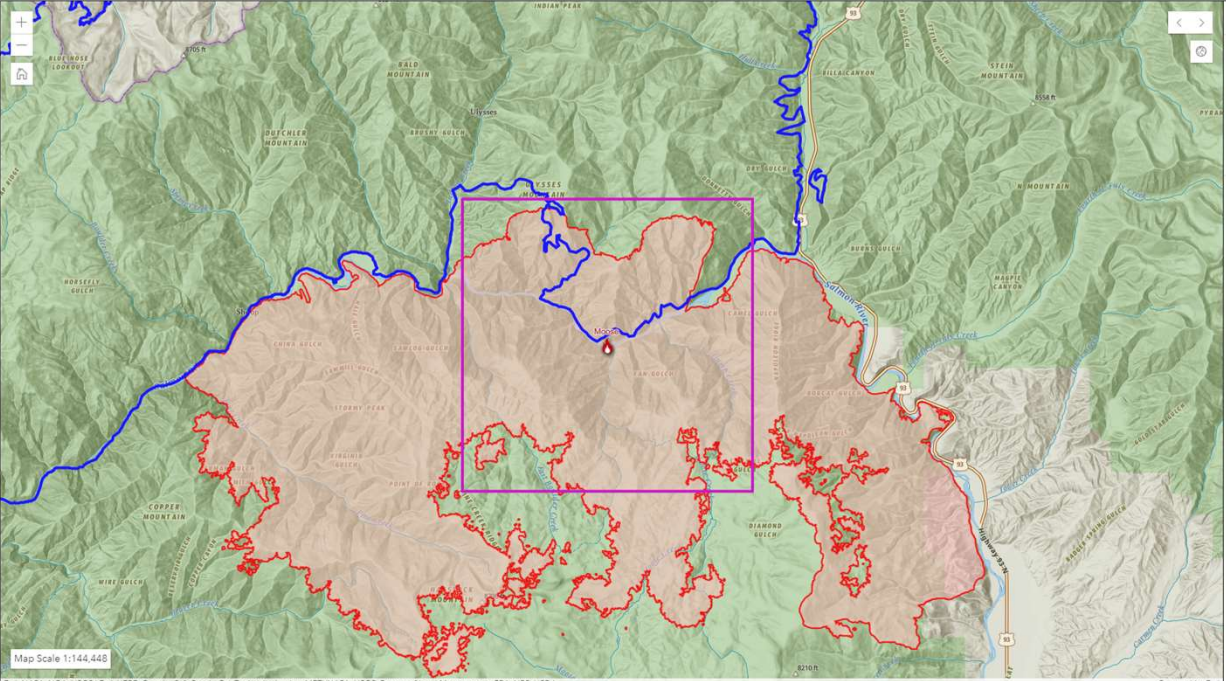
Incident Info Analysis Relative Risk Strategy Elaborations DA Rationale Periodic Assessment MORs

New Analysis Existing Analyses

Existing analysis records for: Moose

EXPORT Filter by Analysis Name, Analyst Name, or Analysis Type

ANALYSIS NAME	ANALYSIS TYPE	ANALYST NAME	STATUS	CREATED DATE/TIME
Items per page: 10 0 of 0 < > >>				



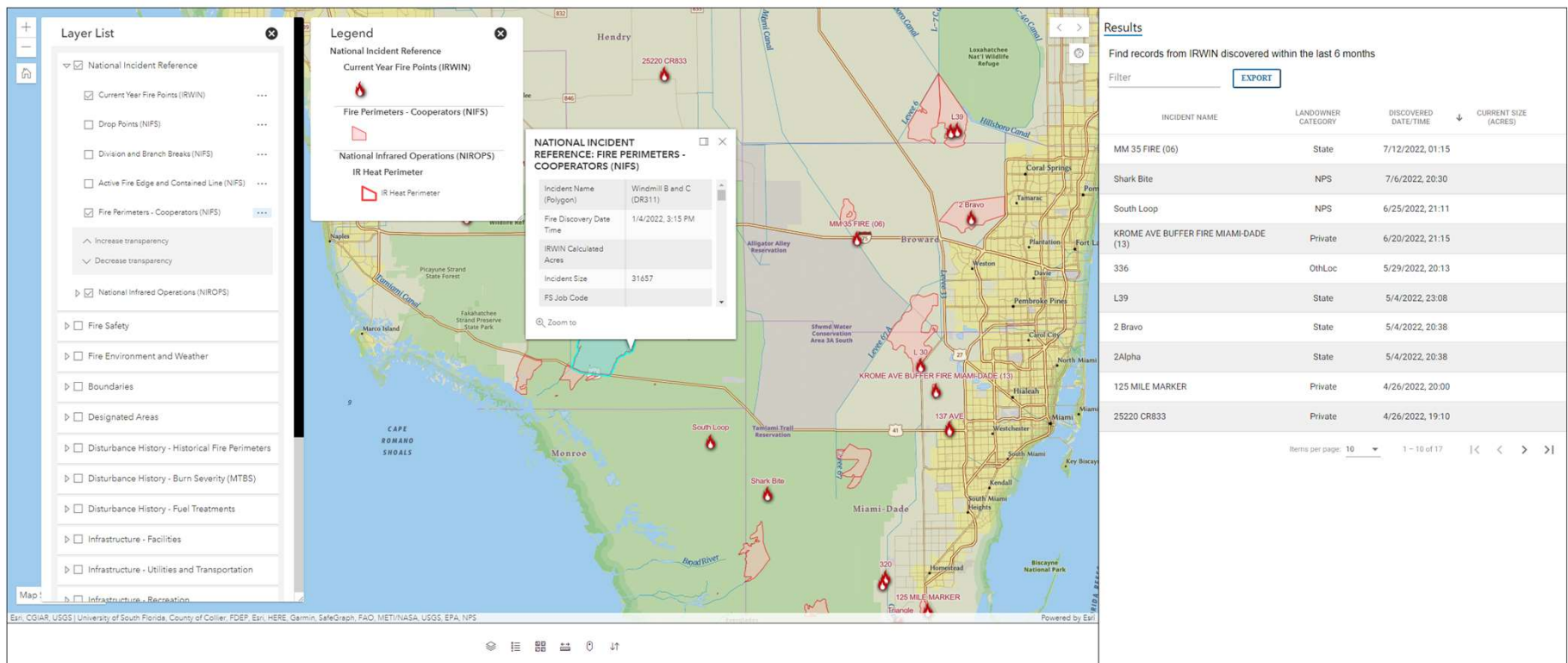
Map Scale 1:144,448

Esri, NASA, NOAA, USGS, Esri, HERE, Garmin, SafeGraph, GeoTechnologies, Inc, METI/NASA, USGS, Bureau of Land Management, EPA, NPS, USDA

Powered by Esri

WFDSS Next Gen – National Incident Reference -  
Clicking on the edge of a fire perimeter yields legend  
data and detailed fire information

## Incidents

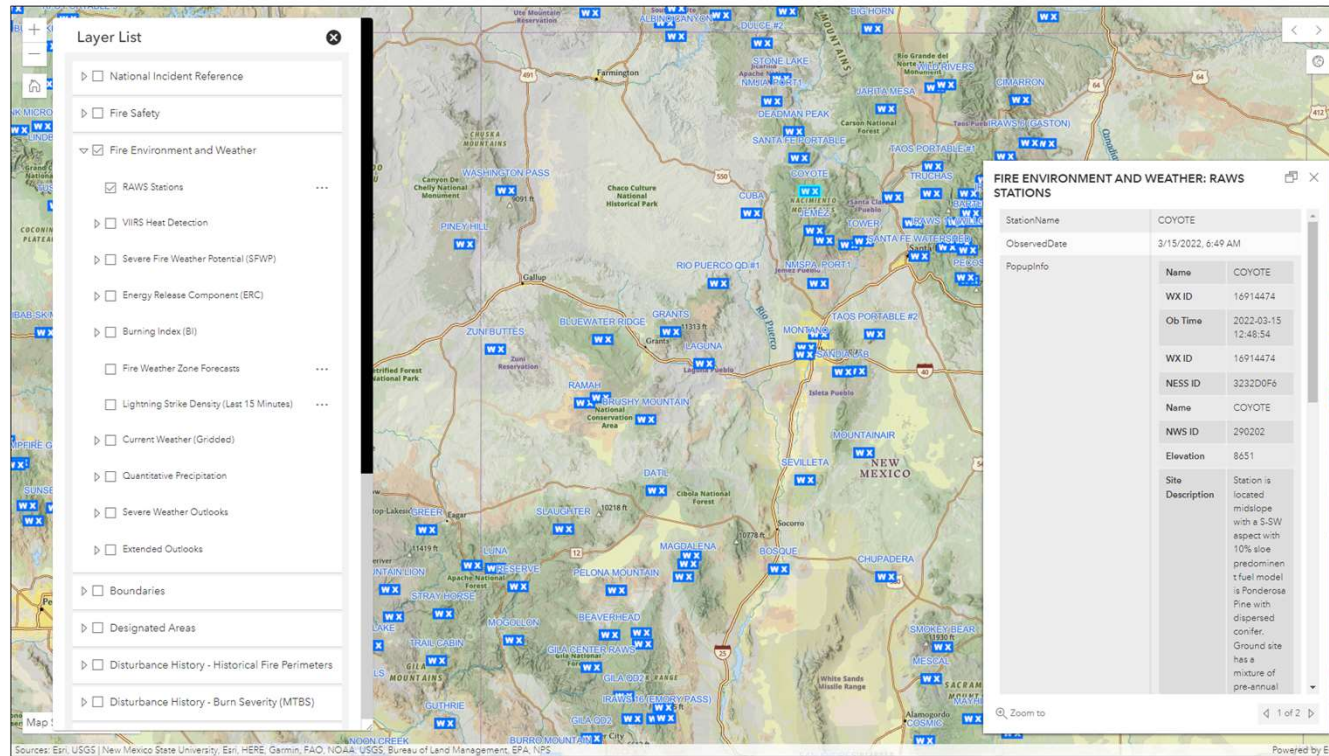




# WFDSS Next Gen – Fire Environment & Weather layers - RAWS date provides links to MesoWest

[My Home](#) [Incidents](#) [Analysis](#) [Reports](#) [Resources](#) [Contact Us](#)

## Incidents



## FIRE ENVIRONMENT AND WEATHER: RAWS STATIONS

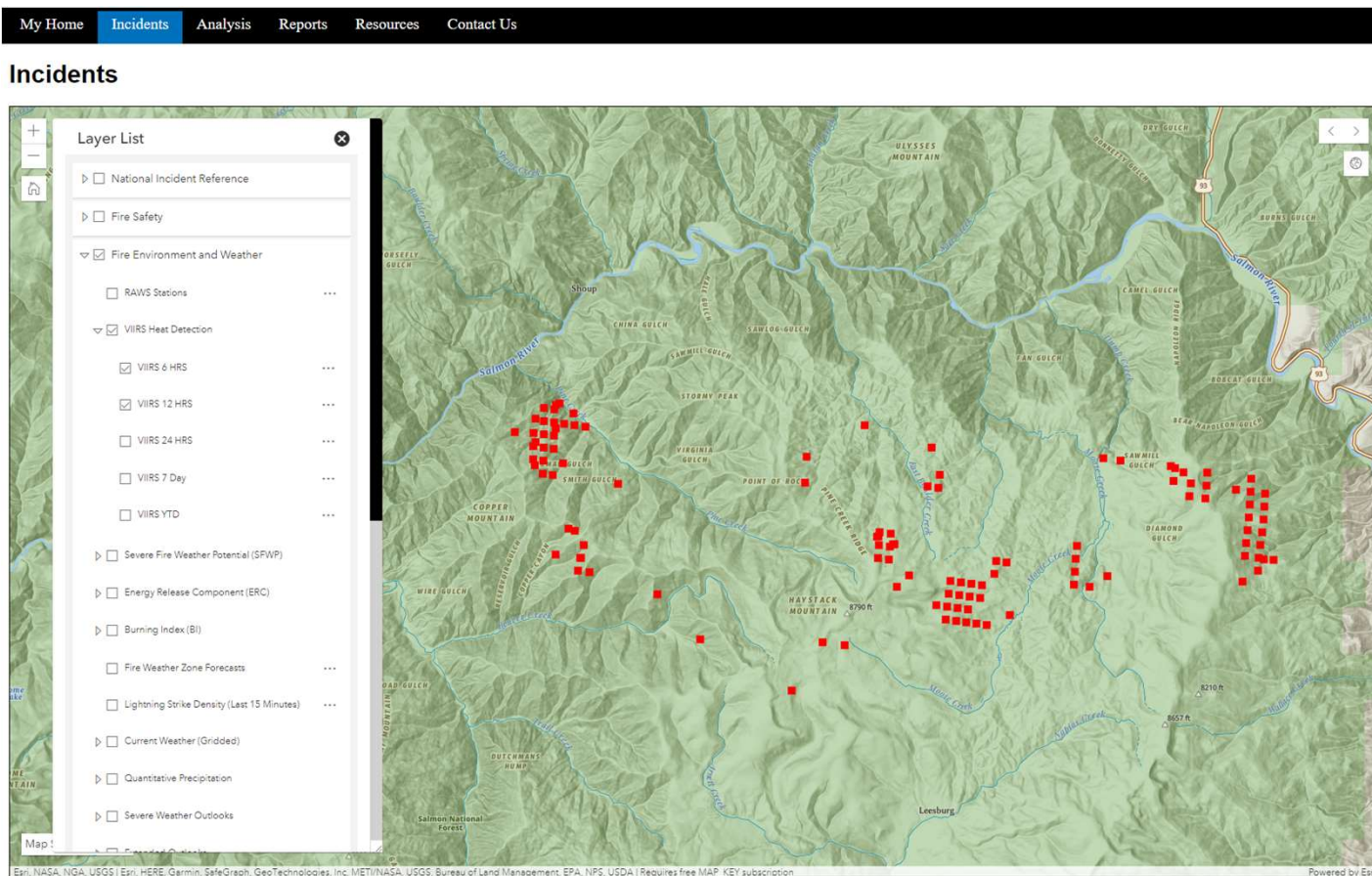
Status	1
Rain Accumulation	2.14 inches
Wind Speed MPH	4 mph
Wind Direction Degrees	157 degrees
Air Temperature, Standard Placement	21 deg. F
Relative Humidity	54 %
Battery Voltage	13 volts
Wind Direction, Peak	170 degrees
Wind Speed Peak MPH	6 mph
Solar Radiation	0 w/m2
Mesowest	<a href="#">MesoWest Link for COYNS</a>

Zoom to

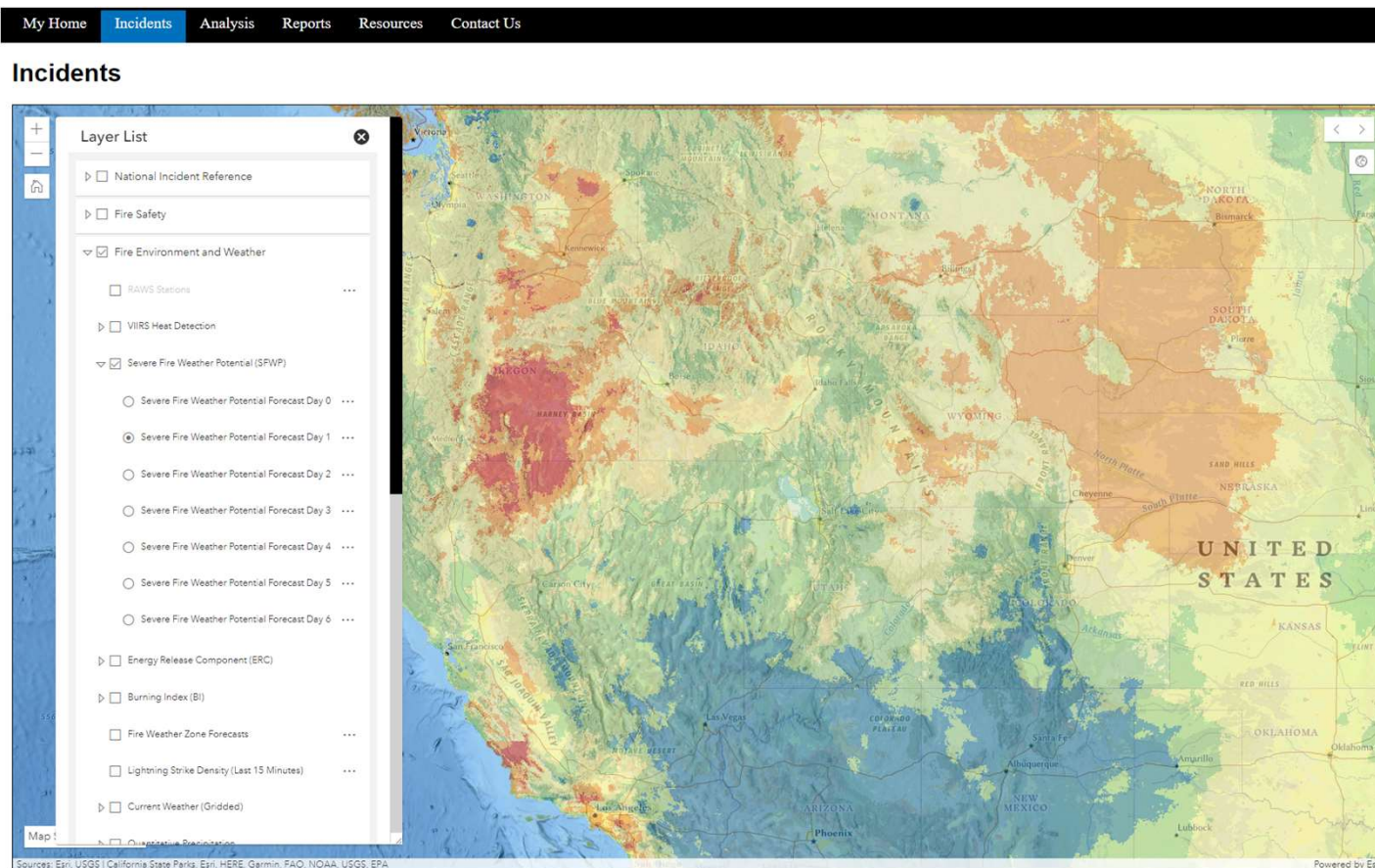
1 of 2



# WFDSS Next Gen – Fire Environment & Weather layers - VIIRS Heat Detection



# WFDSS Next Gen – Fire Environment & Weather layers - Severe Fire Weather Potential from WildfireSAFE/WFAS

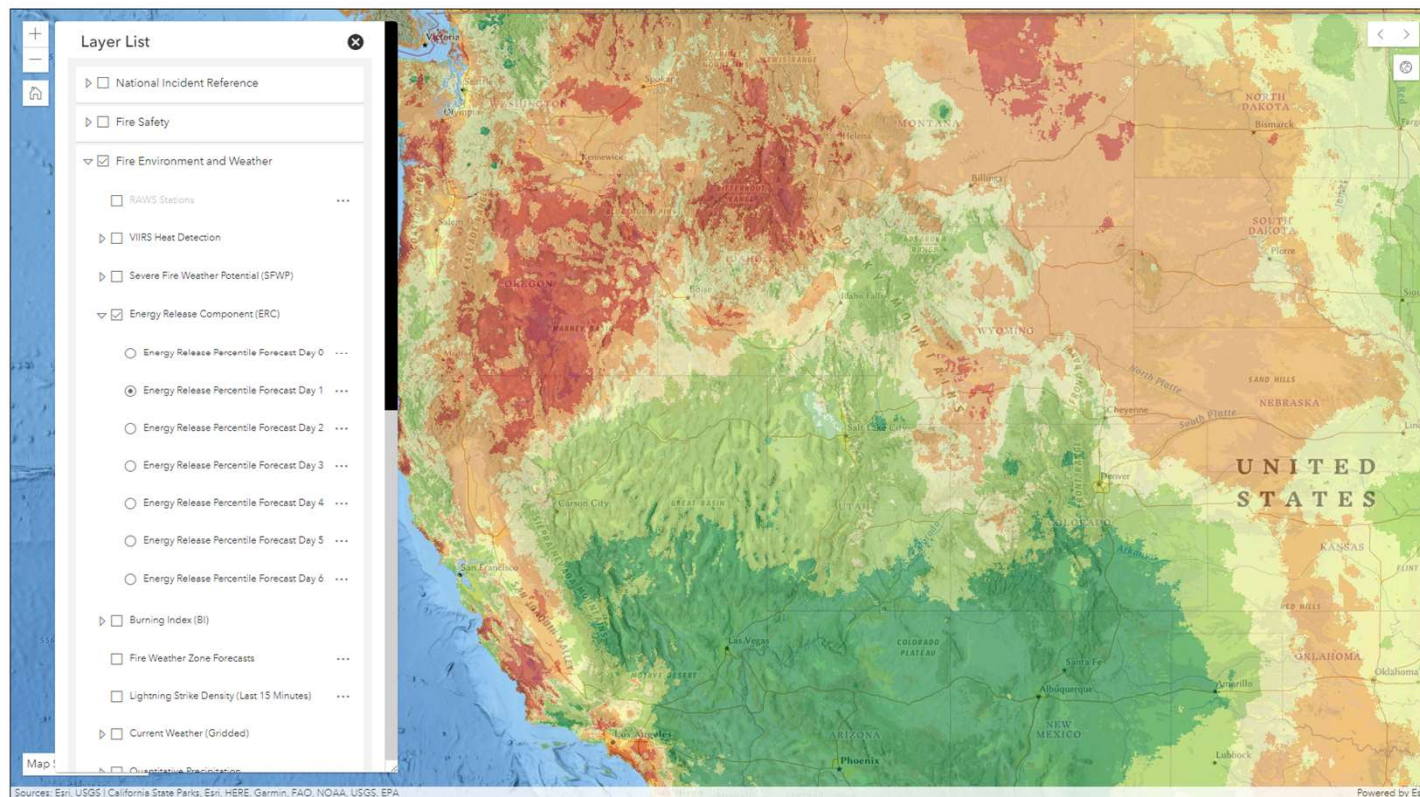




# WFDSS Next Gen – Fire Environment & Weather layers - Energy Release Component (ERC) Forecast from WildfireSAFE/WFAS

[My Home](#) [Incidents](#) [Analysis](#) [Reports](#) [Resources](#) [Contact Us](#)

## Incidents

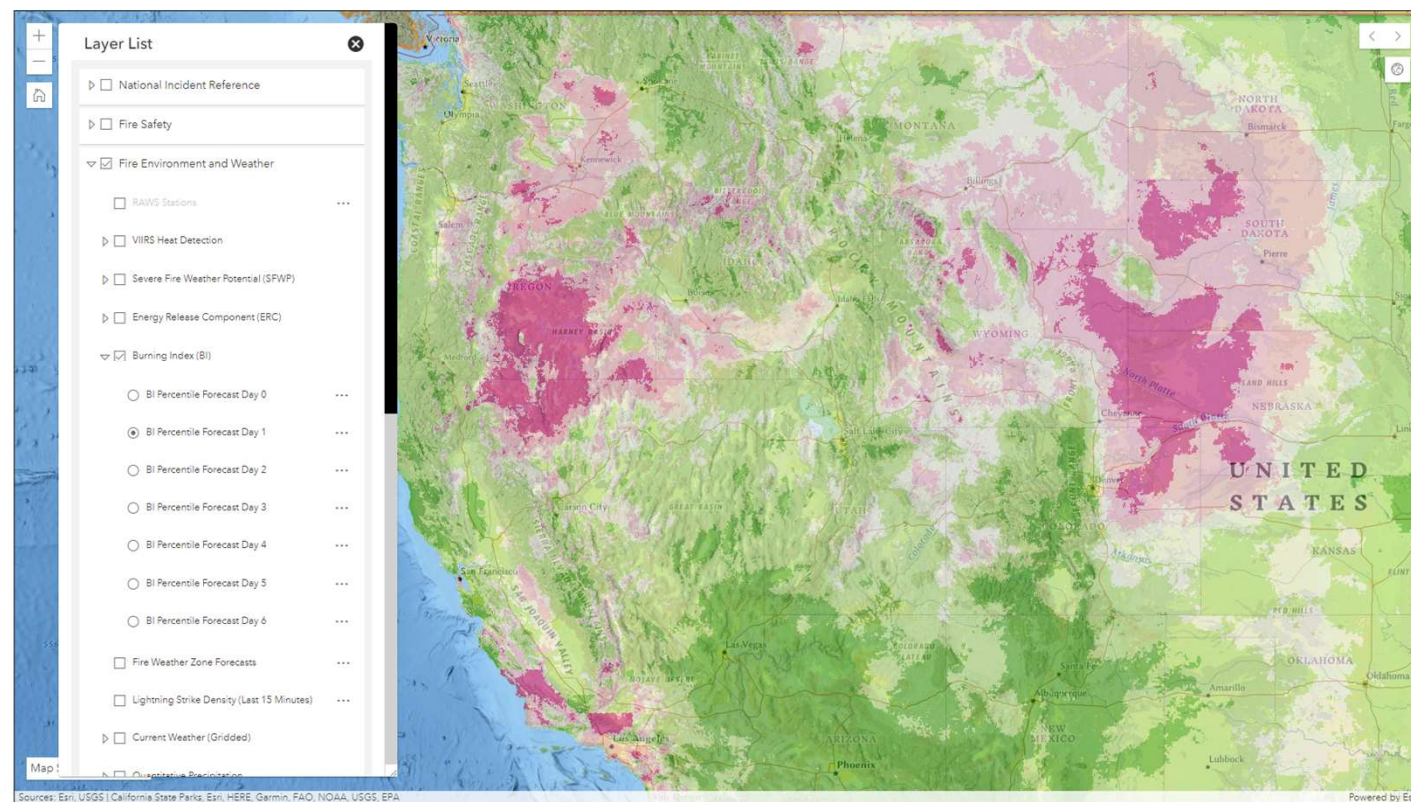




# WFDSS Next Gen – Fire Environment & Weather layers - Burning Index (BI) Forecast from WildfireSAFE/WFAS

[My Home](#) [Incidents](#) [Analysis](#) [Reports](#) [Resources](#) [Contact Us](#)

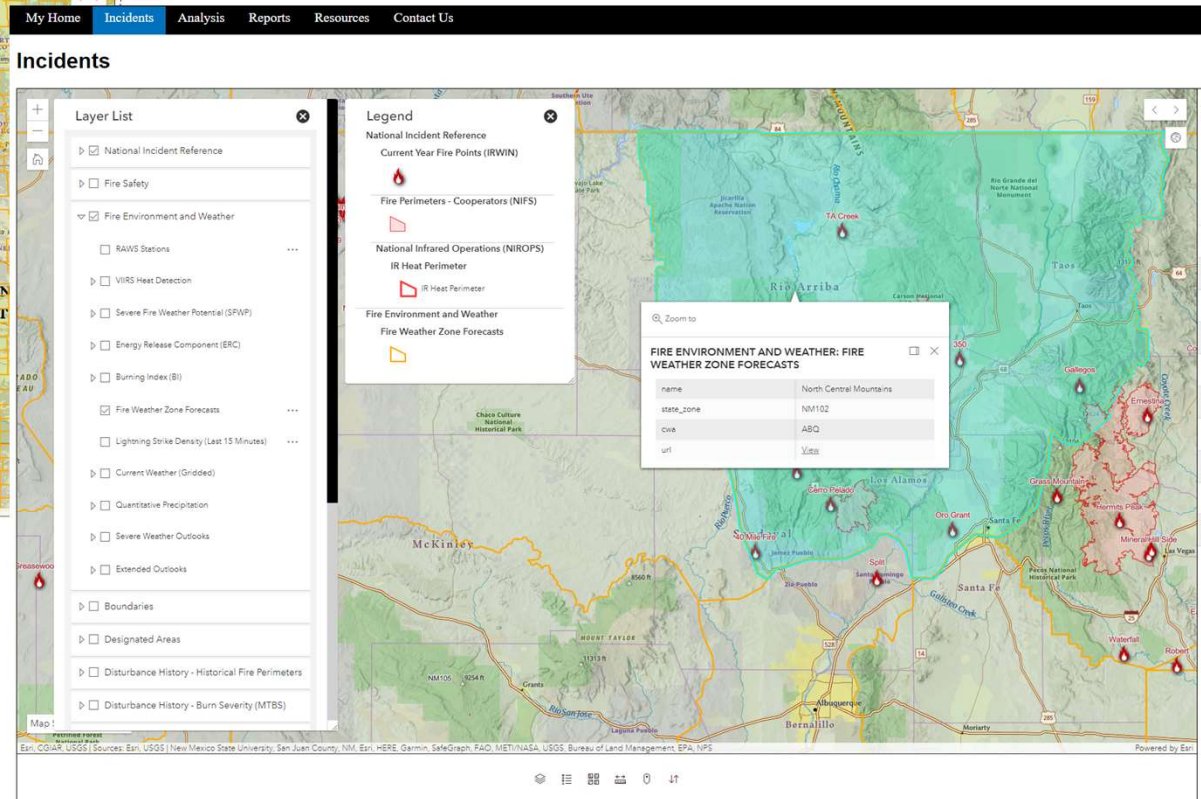
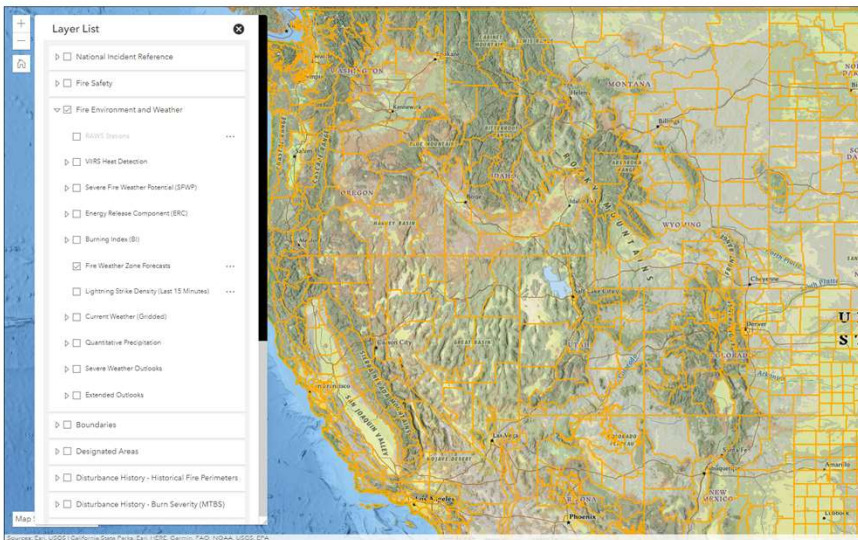
## Incidents



# WFDSS Next Gen – Fire Environment & Weather layers – Fire Weather Zone Forecasts – Click on zone boundary to see details and link to forecast

My Home Incidents Analysis Reports Resources Contact Us

## Incidents

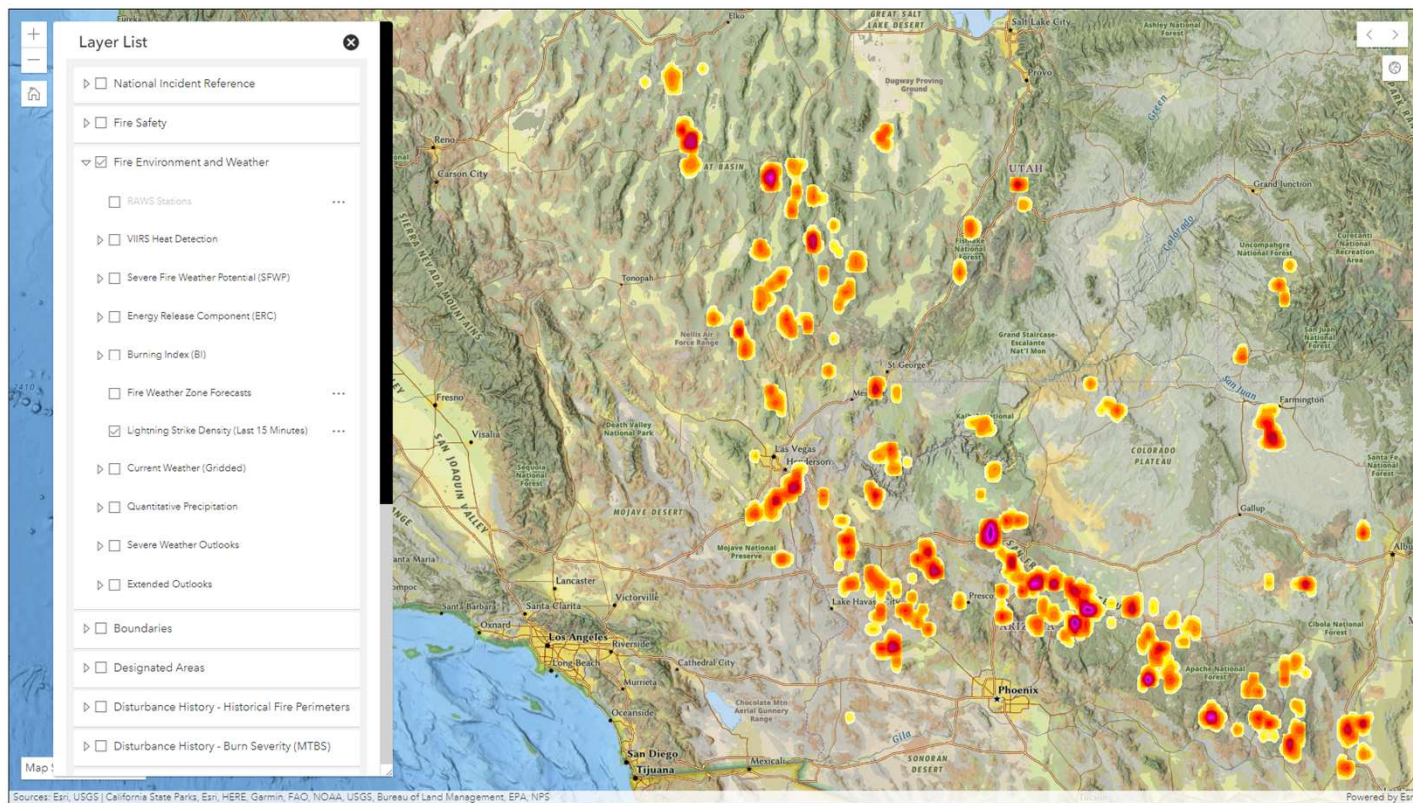




# WFDSS Next Gen – Fire Environment & Weather layers - Lightning Strike Density (last 15 Minutes)

My Home Incidents Analysis Reports Resources Contact Us

## Incidents

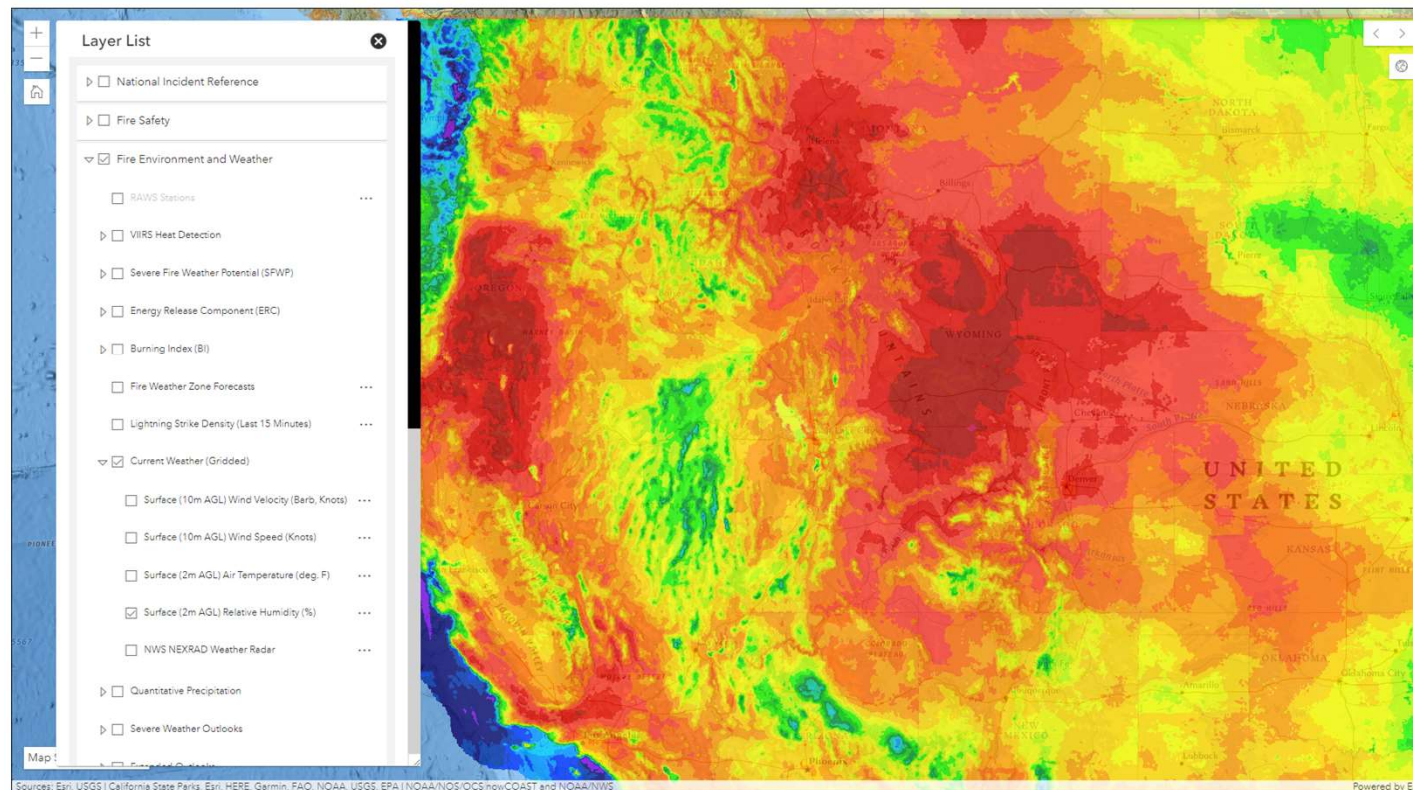




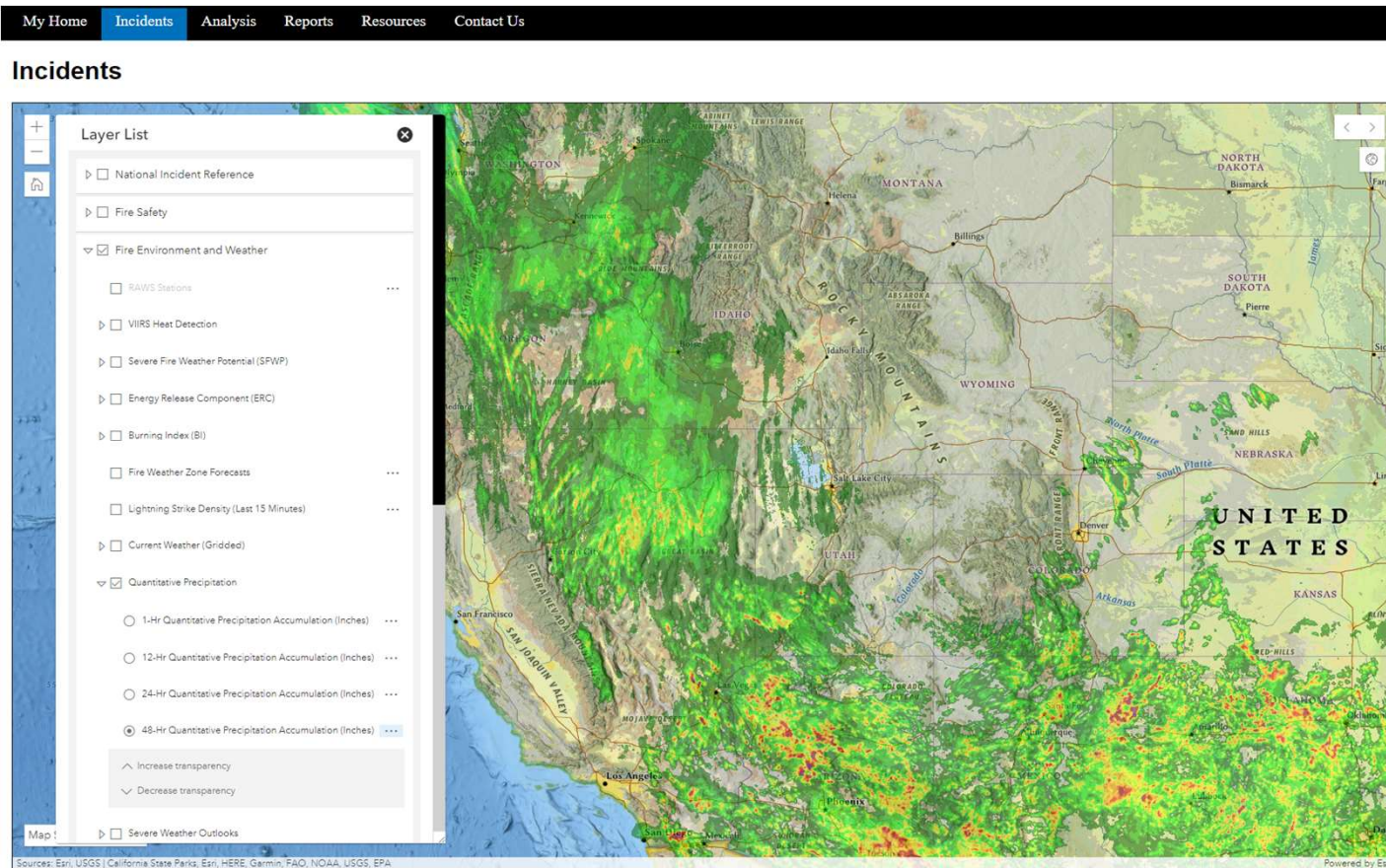
# WFDSS Next Gen – Fire Environment & Weather layers- Current Weather (Gridded) provides Wind Velocity, Wind Speed, Air Temp, Relative Humidity & NWS NEXRAD Weather Radar

[My Home](#) [Incidents](#) [Analysis](#) [Reports](#) [Resources](#) [Contact Us](#)

## Incidents

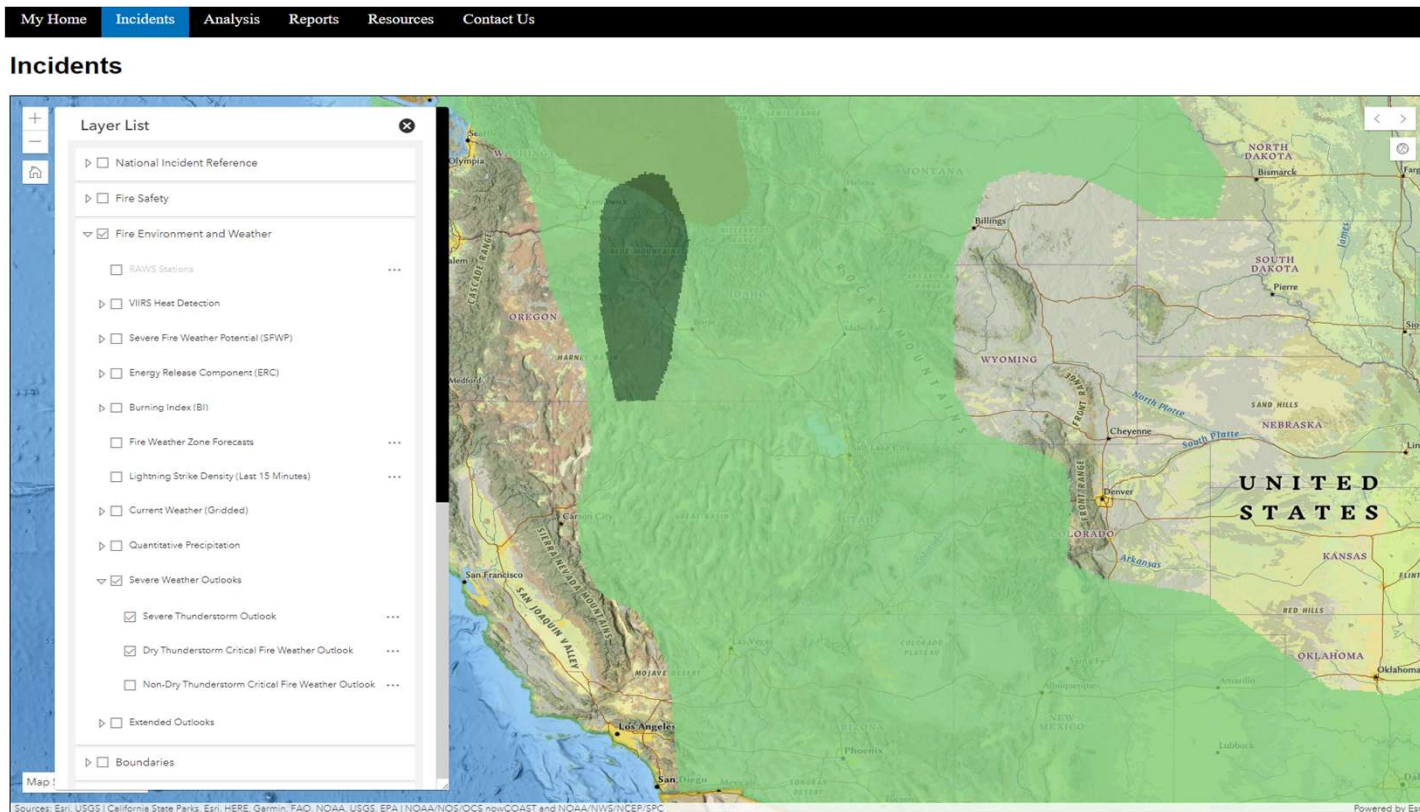


# WFDSS Next Gen – Fire Environment & Weather layers - Quantitative Precipitation – 1 Hr, 12 Hr, 24 Hr & 48 Hr Precipitation Accumulation



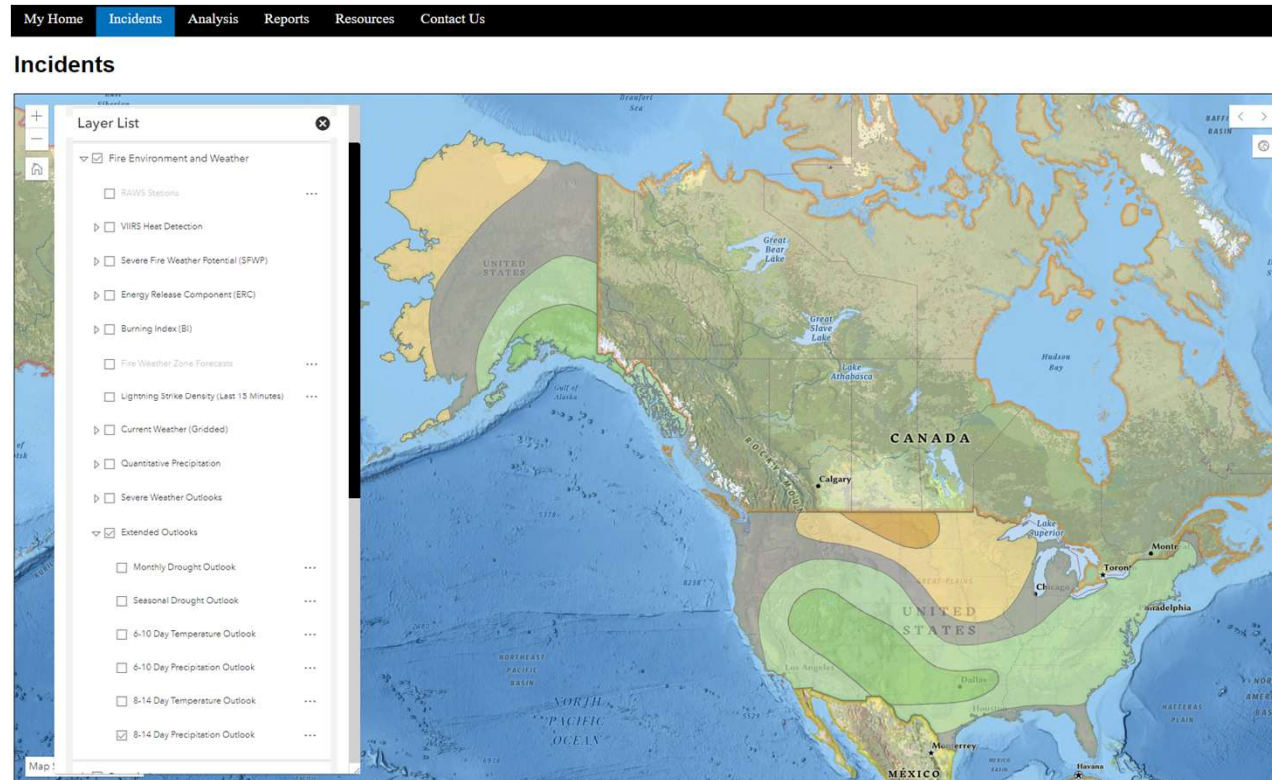


# WFDSS Next Gen – Fire Environment & Weather layers – Severe Weather Outlooks – Severe Thunderstorm, Dry Thunderstorm Critical Fire Weather, Non-Dry Thunderstorm Critical Fire Weather





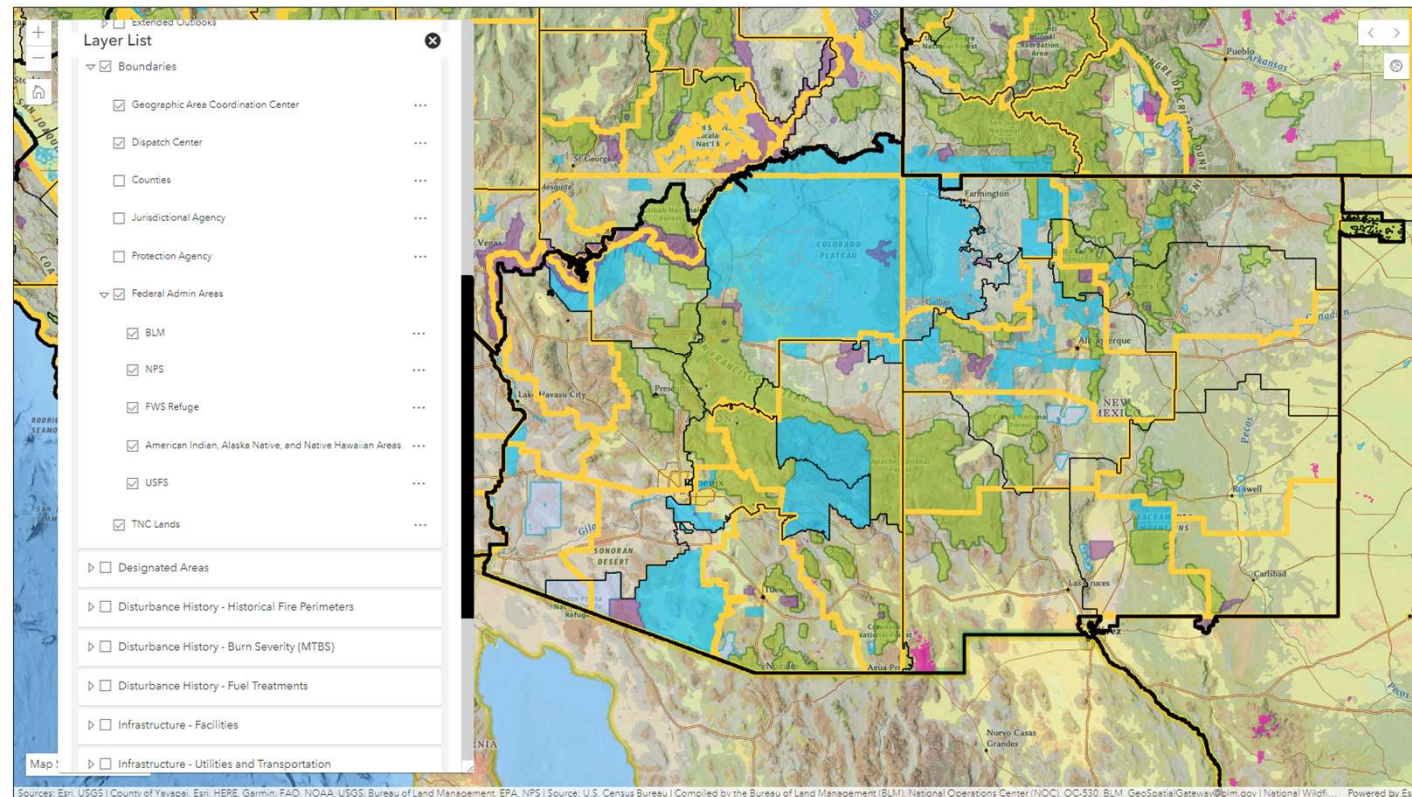
# WFDSS Next Gen – Fire Environment & Weather - Extended Outlooks – Monthly Drought, Seasonal Drought, 6-10 Day Temperature, 6-10 Day Precipitation, 8-14 Temperature, 8-14 Day Precipitation



# WFDSS Next Gen – Boundaries

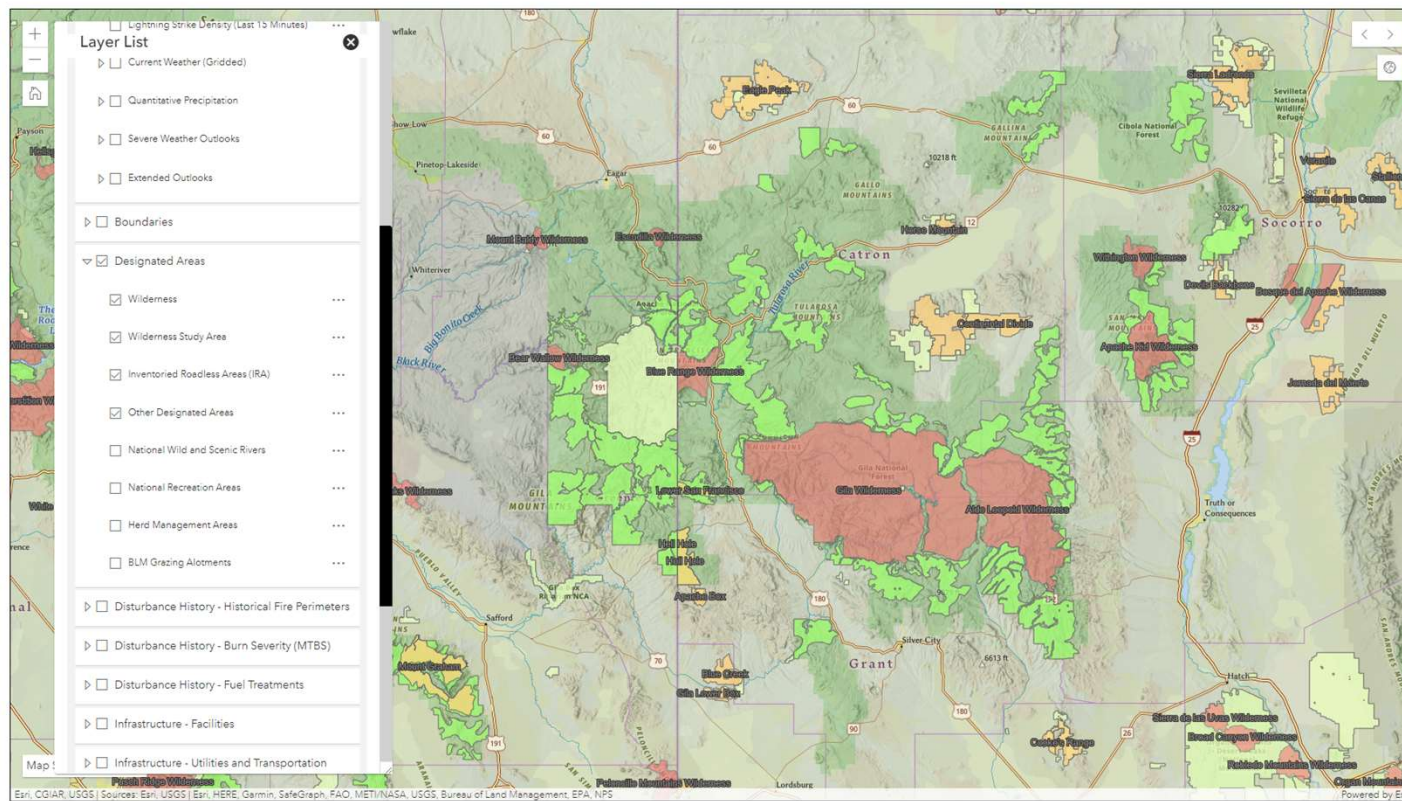
[My Home](#) [Incidents](#) [Analysis](#) [Reports](#) [Resources](#) [Contact Us](#)

## Incidents



# WFDSS Next Gen – Designated Areas

## Incidents





WFDSS Next Gen – Some layers are only available at certain zoom levels. They become “greyed” out when the zoom is not sufficient

My Home Incidents Analysis Reports Resources Contact Us

### Incidents

The screenshot displays the WFDSS Next Gen web application interface. At the top is a navigation bar with links: My Home, Incidents (active), Analysis, Reports, Resources, and Contact Us. Below this is a title bar for the 'Incidents' section. The main content area features a map of the Western United States, showing states like Oregon, Idaho, Utah, Wyoming, Colorado, New Mexico, and Texas. The map is overlaid with various data layers, including fire perimeters and designated areas. On the left side, there is a 'Layer List' panel. The first section, 'Designated Areas', contains several layers that are greyed out, indicating they are not available at the current zoom level. These include: Wilderness, Wilderness Study Area, Inventoried Roadless Areas (RA), Other Designated Areas, National Wild and Scenic Rivers, National Recreation Areas, Herd Management Areas, and BLM Grazing Allotments. The second section, 'Disturbance History', contains three layers that are also greyed out: Historical Fire Perimeters, Burn Severity (MTBS), and Fuel Treatments. The third section, 'Infrastructure', contains two layers that are greyed out: Facilities and Utilities and Transportation. The map itself shows various geographical features, including mountains, rivers, and cities. The text 'UNITED STATES' is prominently displayed in the center of the map. At the bottom of the map, there is a small text box that reads: 'Sources: Esri, USGS, California State Parks, Esri, HERE, Garmin, FAO, NOAA, USGS, EPA. Powered by Esri.'

Layer List

- ☐ Lightning Strike Density (Last 10 Minutes)
- ☐ Current Weather (Gridded)
- ☐ Quantitative Precipitation
- ☐ Severe Weather Outlooks
- ☐ Extended Outlooks
- ☐ Boundaries
- ☒ Designated Areas
  - ☒ Wilderness
  - ☒ Wilderness Study Area
  - ☒ Inventoried Roadless Areas (RA)
  - ☒ Other Designated Areas
  - ☐ National Wild and Scenic Rivers
  - ☐ National Recreation Areas
  - ☐ Herd Management Areas
  - ☐ BLM Grazing Allotments
- ☐ Disturbance History - Historical Fire Perimeters
- ☐ Disturbance History - Burn Severity (MTBS)
- ☐ Disturbance History - Fuel Treatments
- ☐ Infrastructure - Facilities
- ☐ Infrastructure - Utilities and Transportation

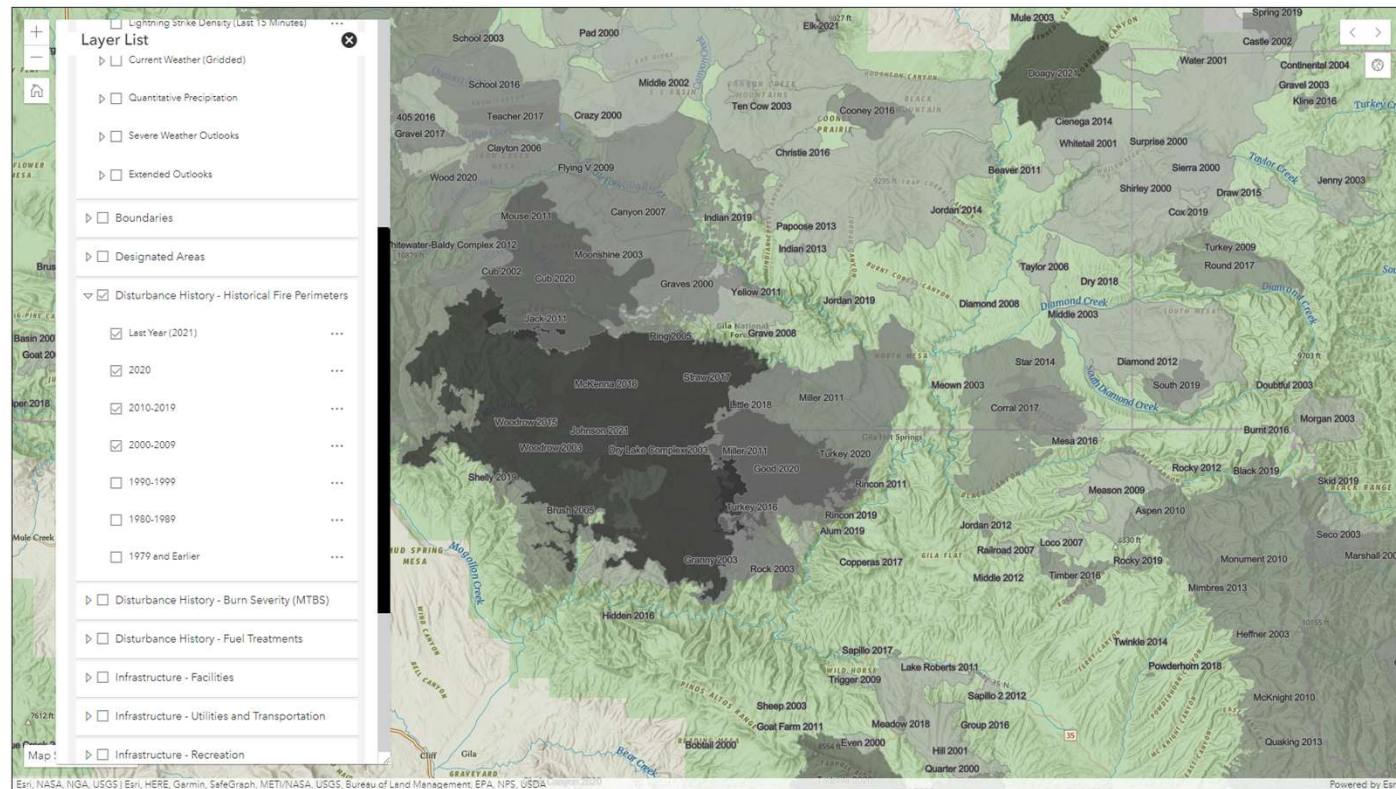
Map 1

Sources: Esri, USGS, California State Parks, Esri, HERE, Garmin, FAO, NOAA, USGS, EPA. Powered by Esri.

# WFDSS Next Gen – Disturbance History – Historical Fire Perimeters

[My Home](#)
[Incidents](#)
[Analysis](#)
[Reports](#)
[Resources](#)
[Contact Us](#)

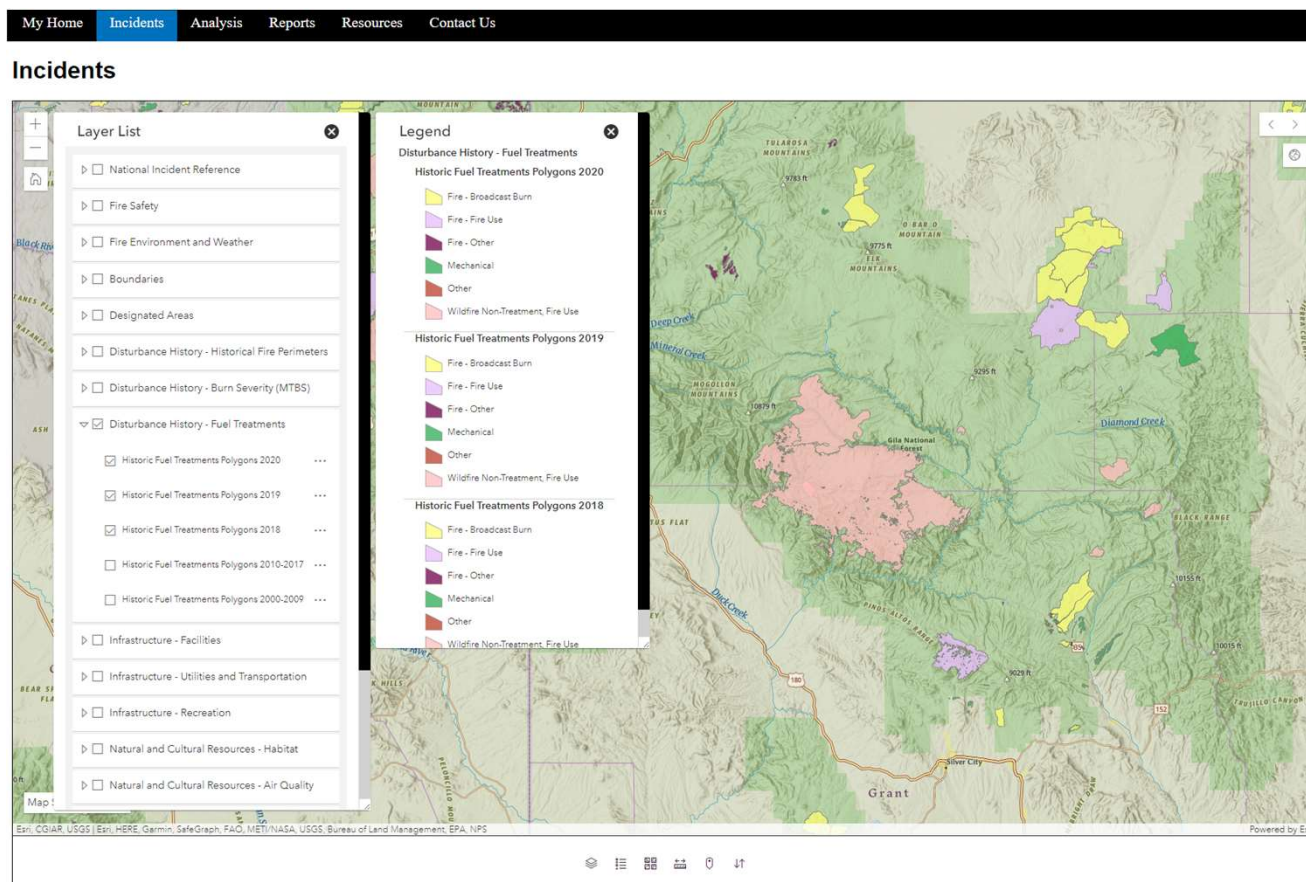
## Incidents





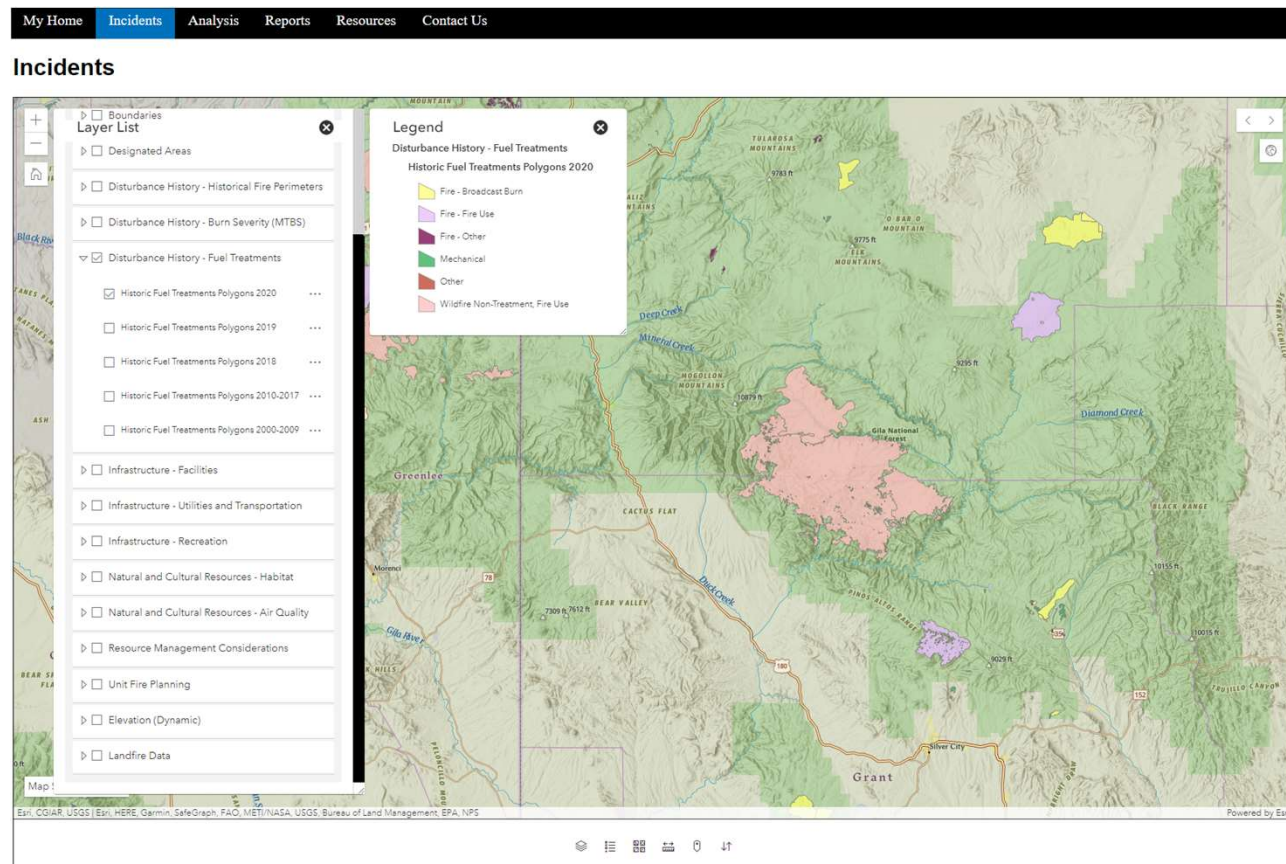
# WFDSS Next Gen – Disturbance History – Fuel Treatments

Legend data shows multiple layers at one time

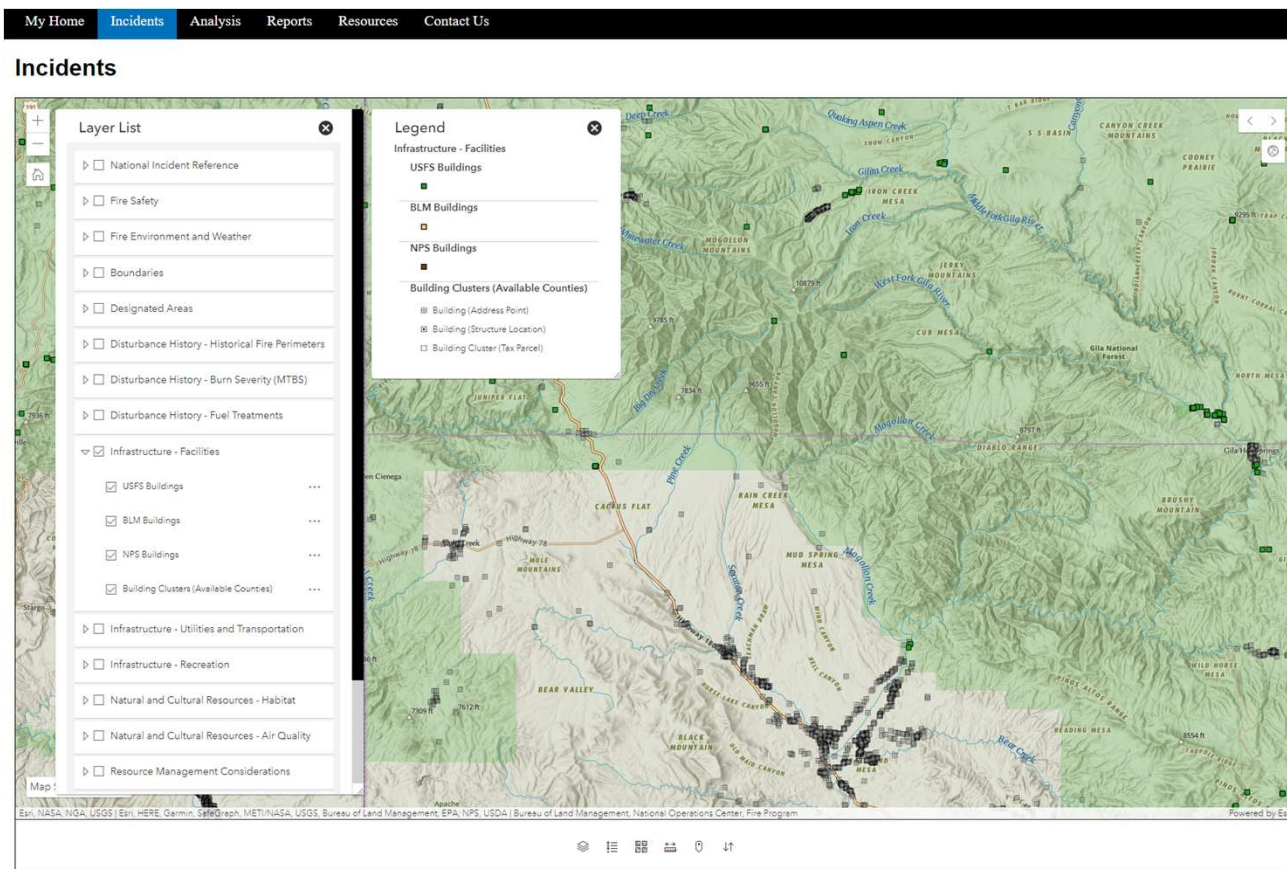




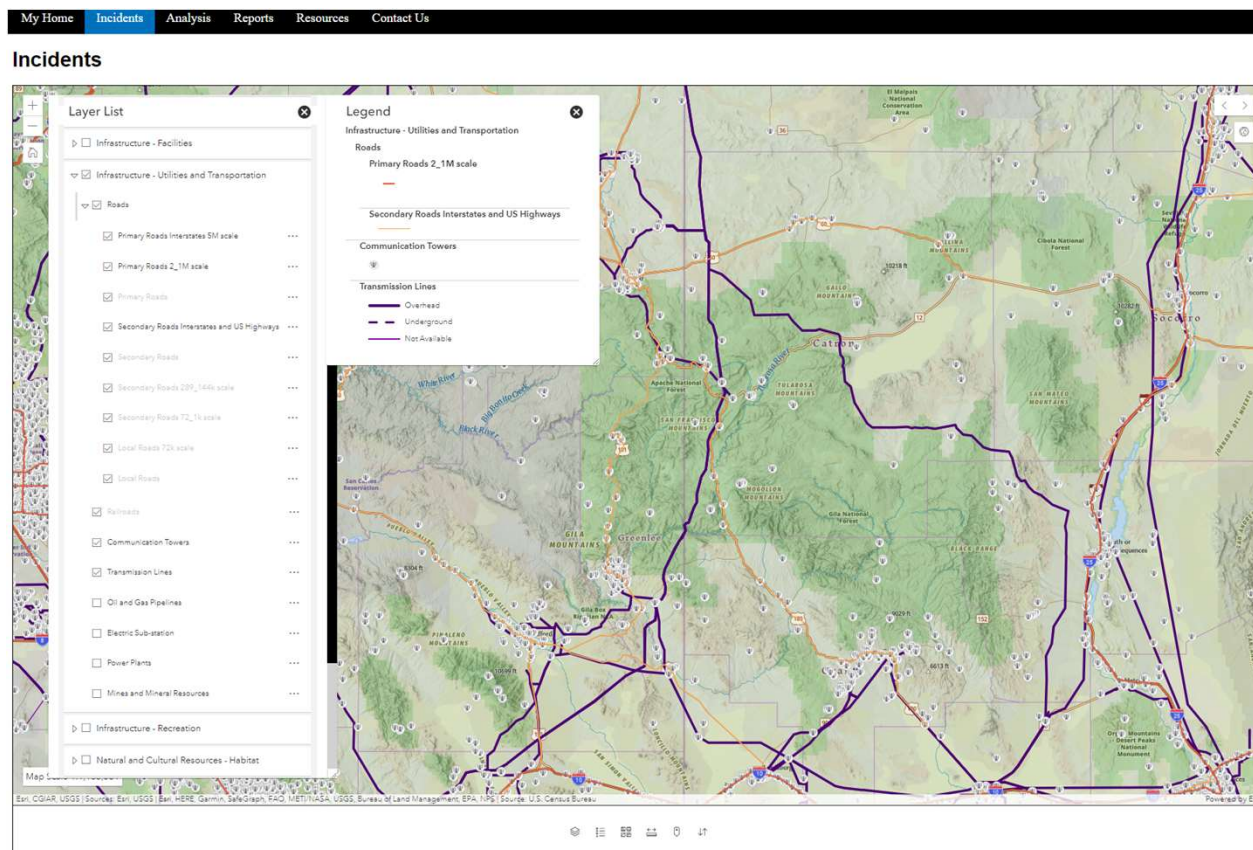
# WFDSS Next Gen – Disturbance History – Fuel Treatments



# WFDSS Next Gen – Infrastructure- Facilities

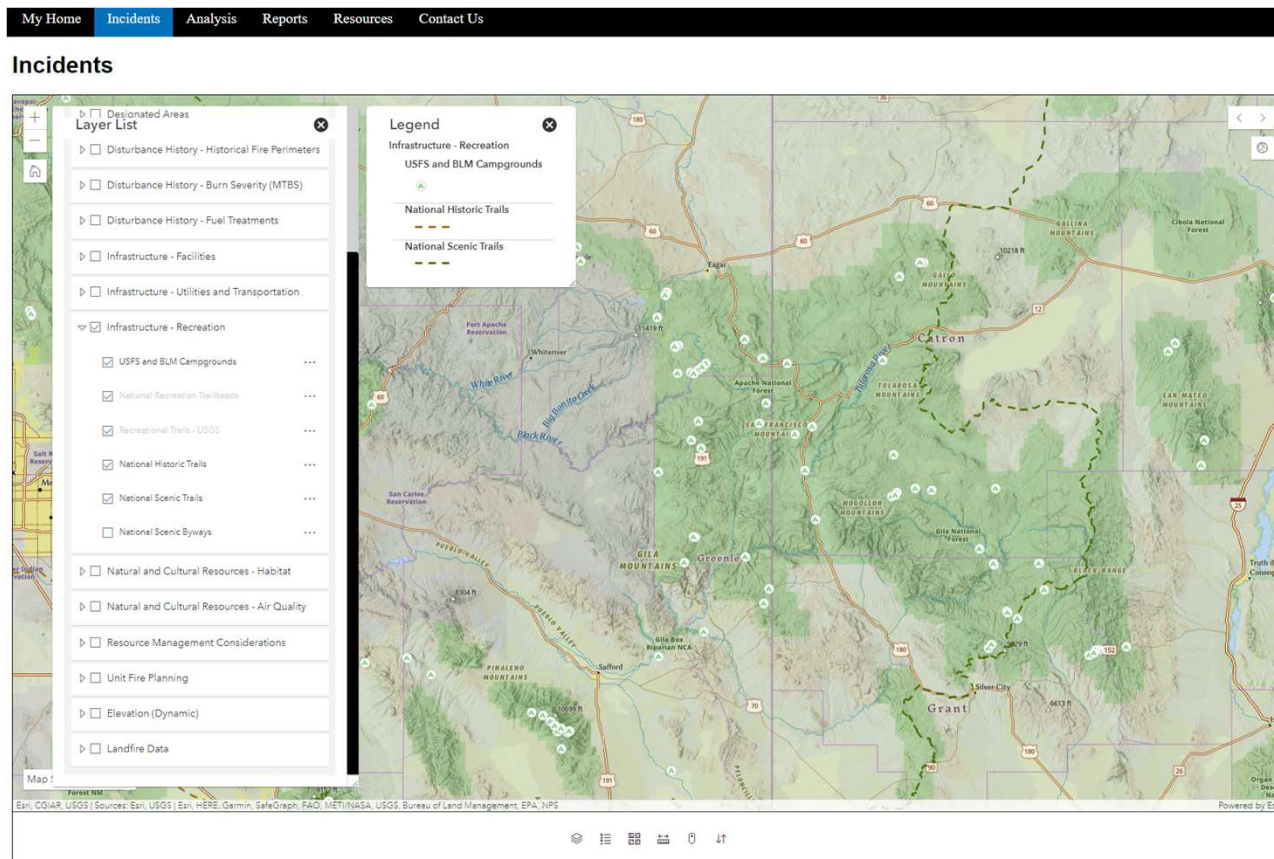


# WFDSS Next gen – Infrastructure – Utilities and Transportation

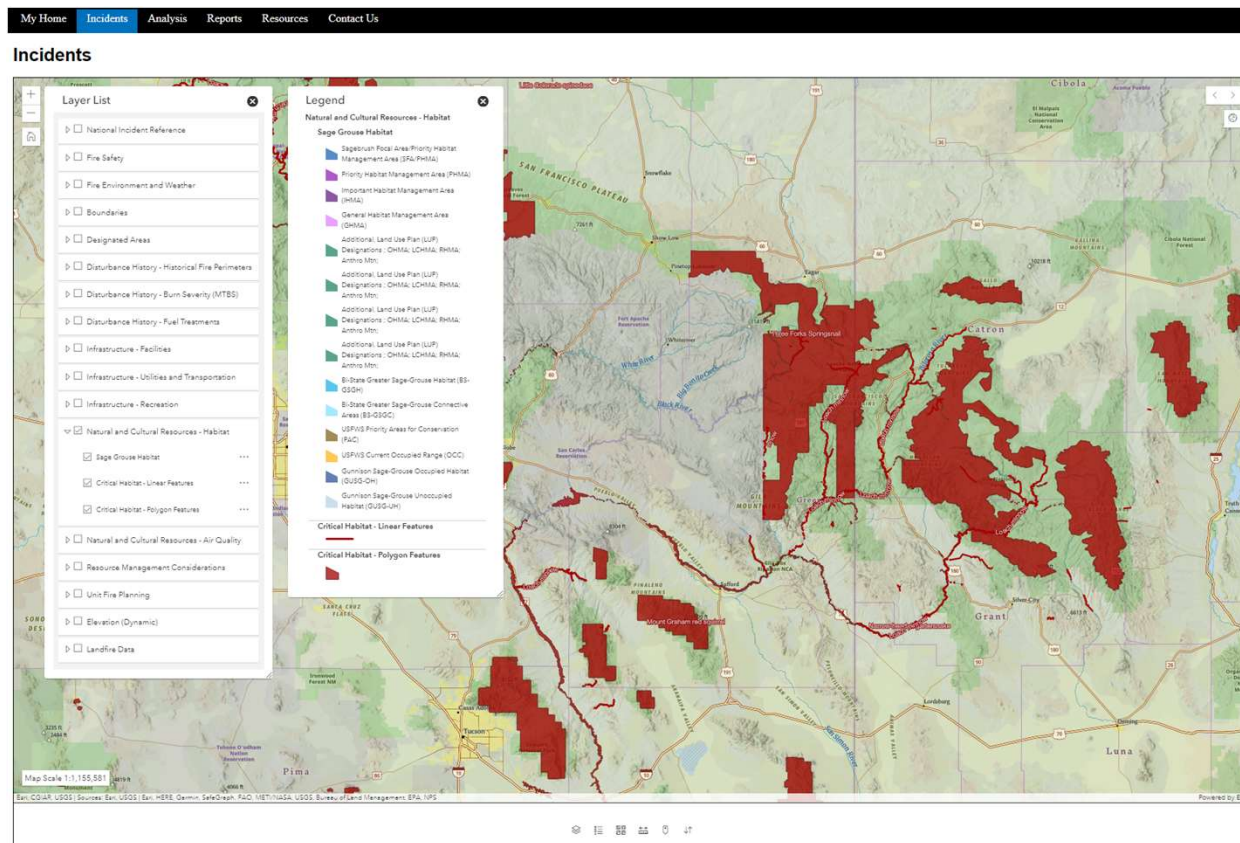




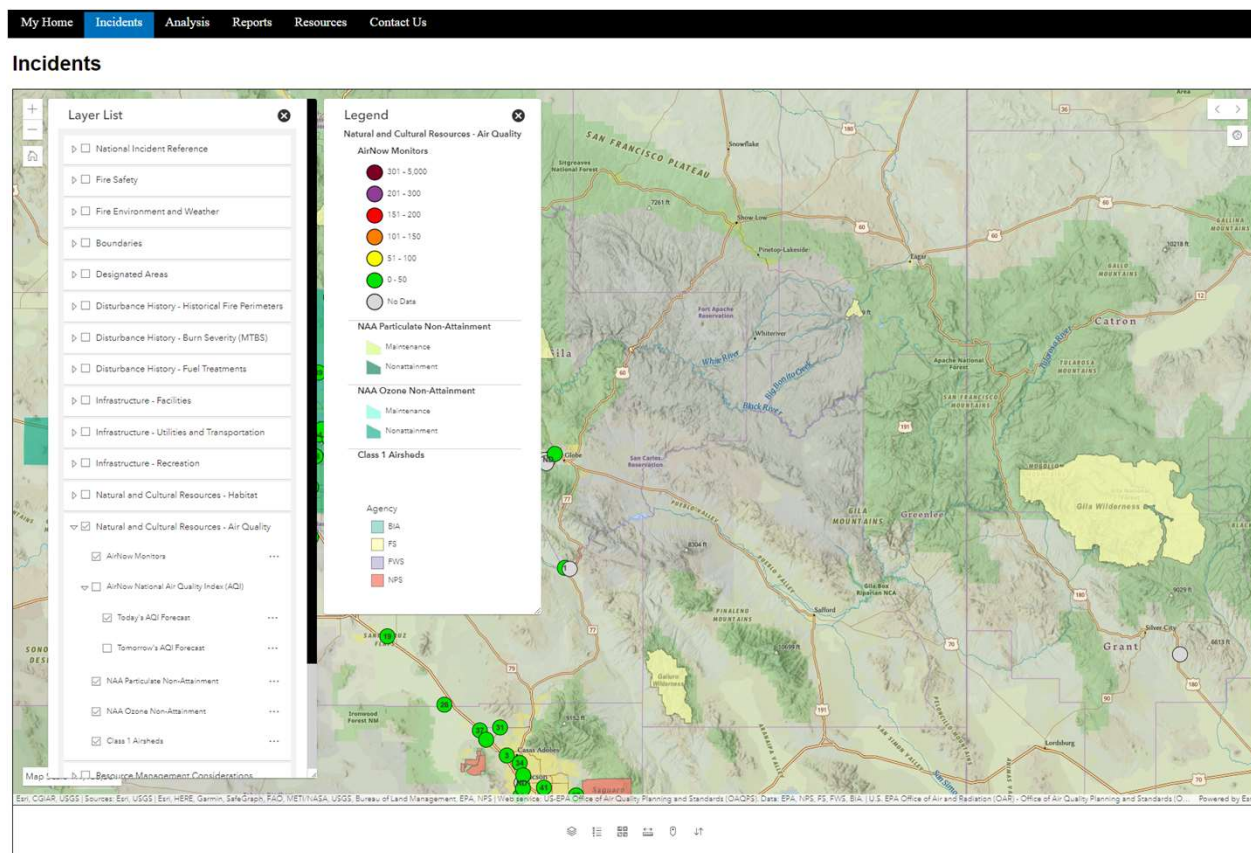
# WFDSS Next Gen – Infrastructure – Recreation



# WFDSS Next Gen – Natural and Cultural Resources - Habitat

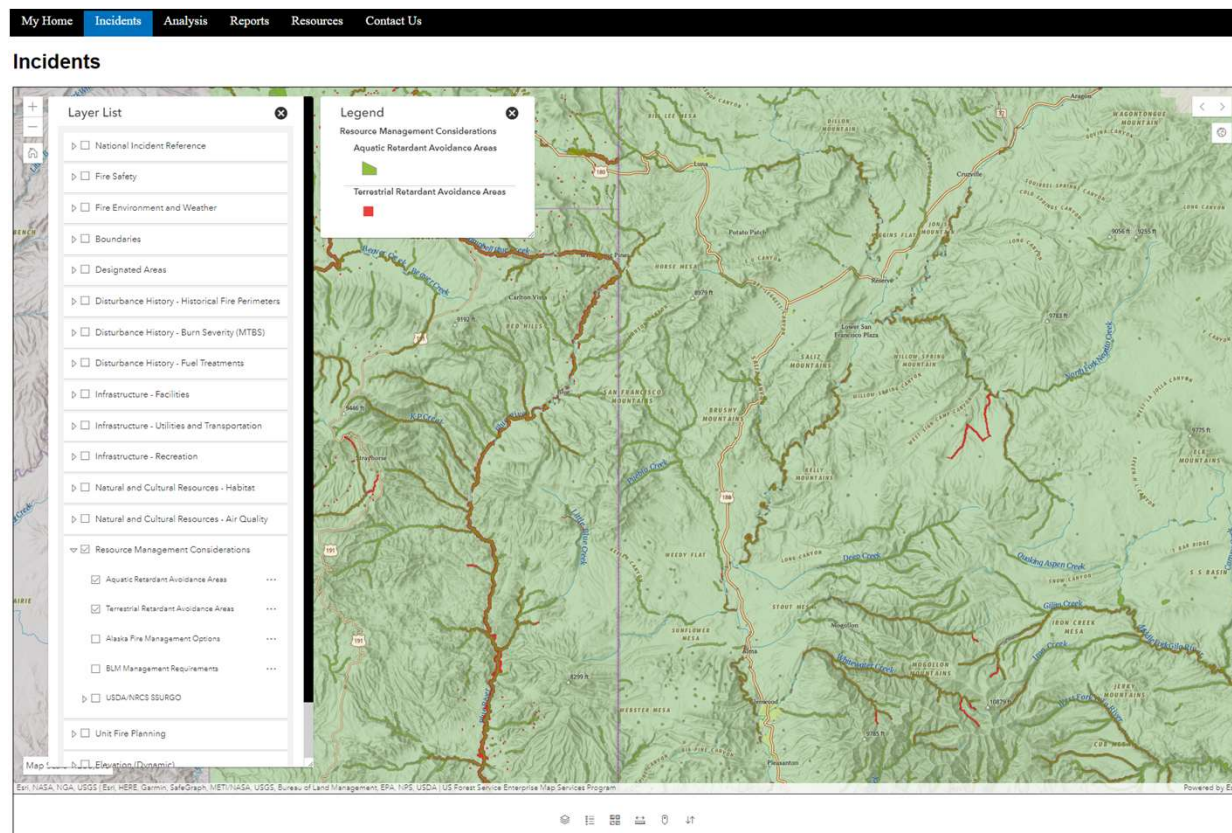


# WFDSS Next Gen – Natural and Cultural Resources – Air Quality – also includes AirNow Air Quality Index (AQI)

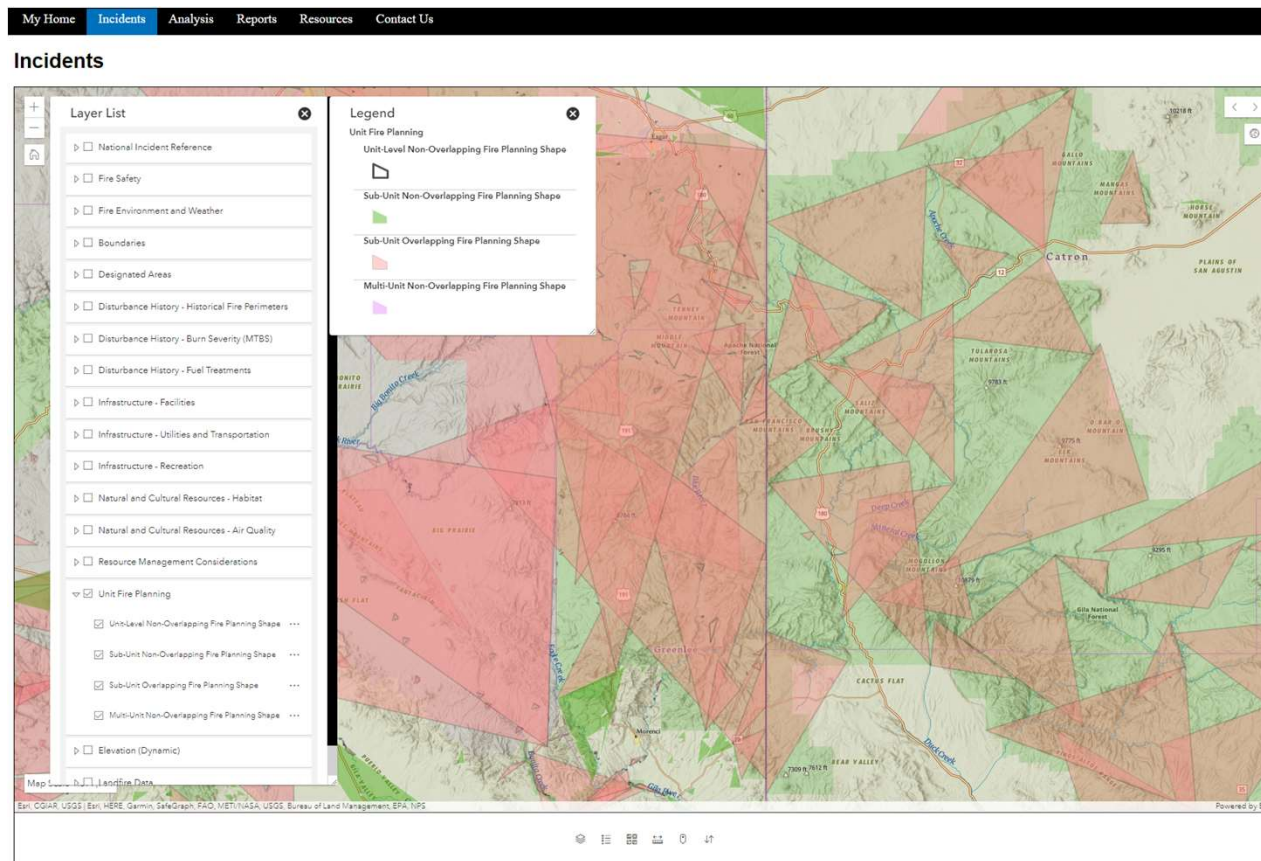




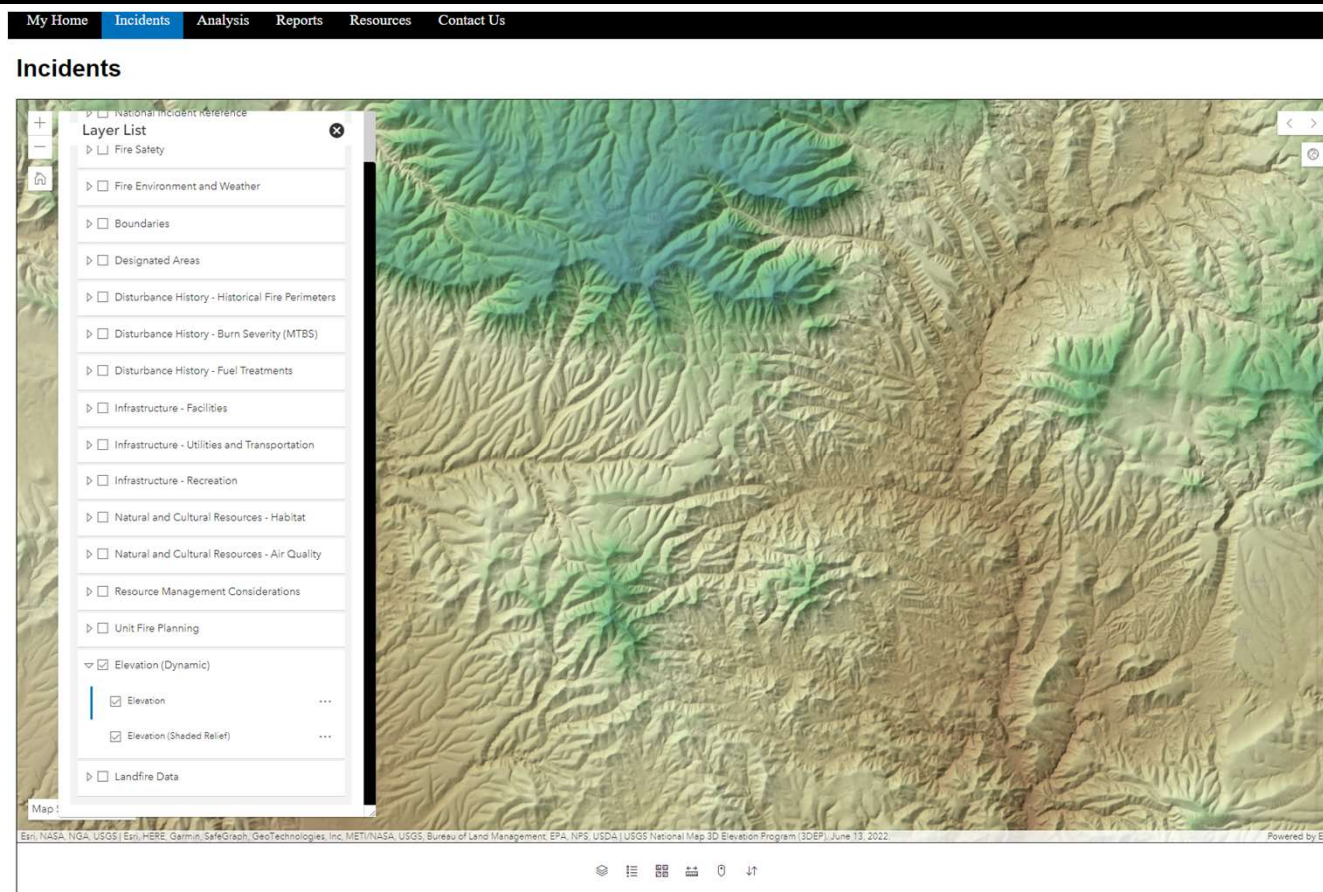
# WFDSS Next Gen – Resource Management Considerations — Includes retardant avoidance areas, AK Management Opts, BLM Management Opts, and USA Soils Map Units



# WFDSS Next Gen – Unit Fire Planning – Currently experiencing a Geometry issue



# WFDSS Next Gen – Elevation Dynamics





# WFDSS Next Gen – Landfire data – will allow for landscape comparisons for analysts with a SWIPE tool – Currently Landfire is experiencing a connectivity issue

