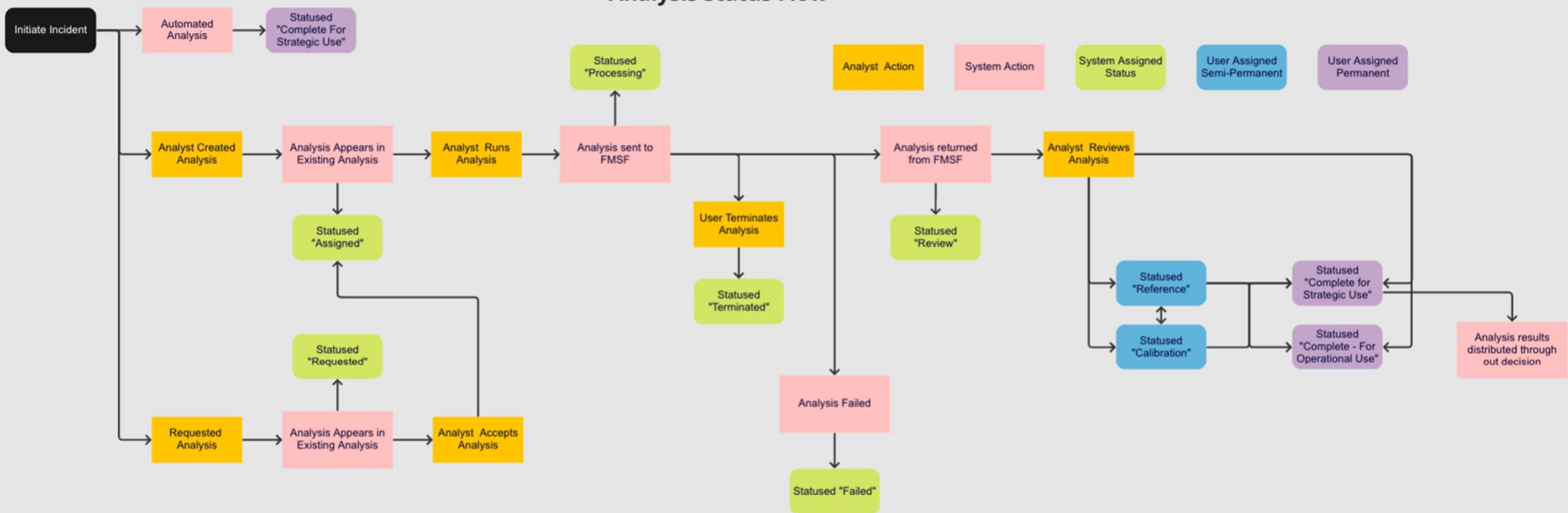


WFDSS NextGen

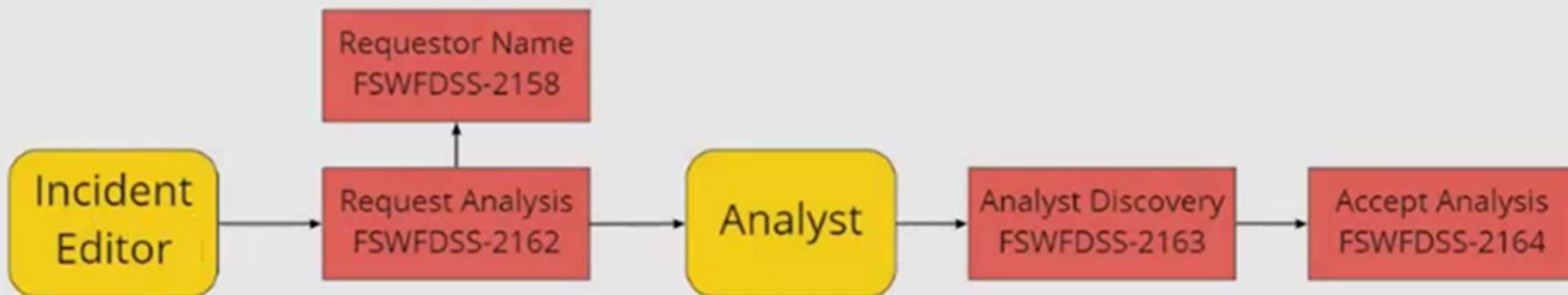
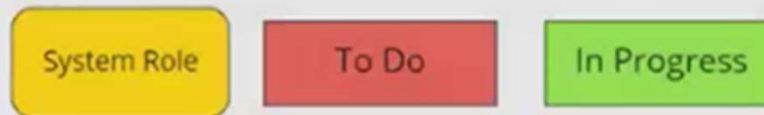
Focus Group Session 8 –
Fire Behavior Analysis Status

WFDSS Next Gen – Analysis Status Flow – The flow is similar to WFDSS Classic, however, the “RETURN TO ASSIGNED” status is no longer available.

Analysis Status Flow



WFDSS Next Gen – Step 1 - Creating an Analysis or Requesting an Analysis – function occurs on the same screen.



WFDSS Next Gen – Create an Analysis – Same page for Analysts and a Requestor. Difference is the Analysis Note is available when users Create or Request.

WFDSS

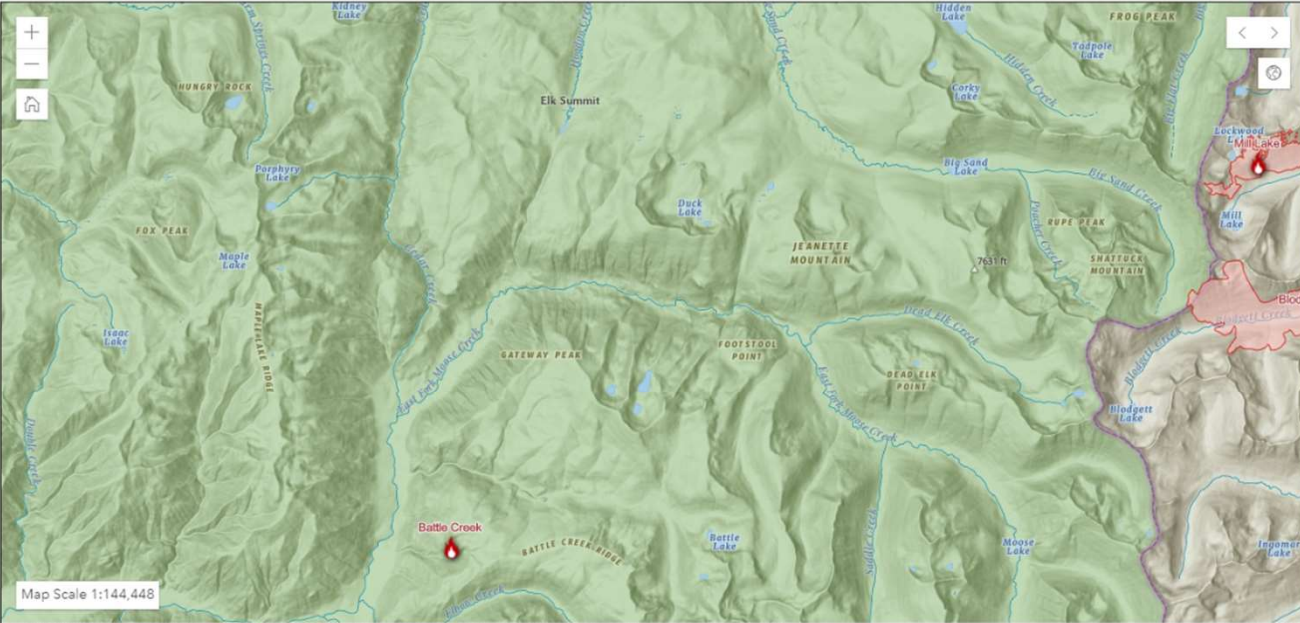
My Home Incidents Analysis Reports Resources Contact Us

GA Preparedness Level: XX | National Preparedness Level: XX

Blodgett Lake

Incident Log

Incident Info Analysis Relative Risk Strategy Elaborations OA Rationale Periodic Assessment MORs



Map Scale 1:144,448

Esri, NASA, NGA, USGS | Esri, HERE, Garmin, SafeGraph, GeoTechnologies, Inc, METI/NASA, USGS, Bureau of Land Management, EPA, NPS, USDA

Powered by Esri

New Analysis Existing Analyses

Choose an Analysis Type

- FlamMap (Basic)
- MTT (ShortTerm)
- FARSITE (NearTerm)
- FSPro

Analysis Name

Analysis Start Date
09/15/2022

Thu Sep 15 2022 00:00:00 GMT-0600

Analysis Note: Not Required

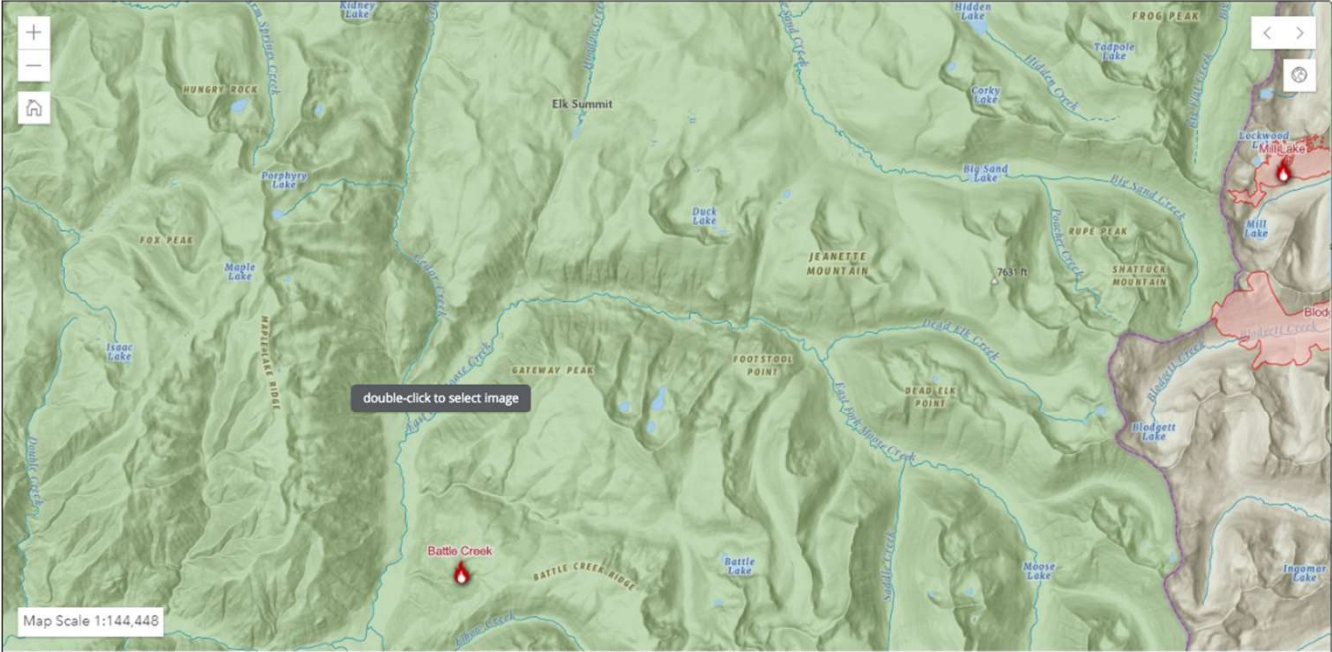
SAVE ANALYSIS CLOSE

WFDSS Next Gen – Accepting a Requested Analysis.

WFDSS My Home Incidents Analysis Reports Resources Contact Us GA Preparedness Level: XX | National Preparedness Level: XX

Blodgett Lake [Incident Log](#)

Incident Info Analysis Relative Risk Strategy Elaborations OA Rationale Periodic Assessment MORs



Map Scale 1:144,448

Esri, NASA, INGA, USGS | Esri, HERE, Garmin, SafeGraph, GeoTechnologies, Inc, METI/NASA, USGS, Bureau of Land Management, EPA, NPS, USDA

Powered by Esri

[FSPro] Weather Landscape

Requested

General

Analysis Name	Analysis Start Date	Accept Analysis
Requested	Invalid date	
Number of Fires	Number of Days	Crown Fire Method
256	7	
Ignition File	Barrier File	<input type="checkbox"/> Fill Barrier

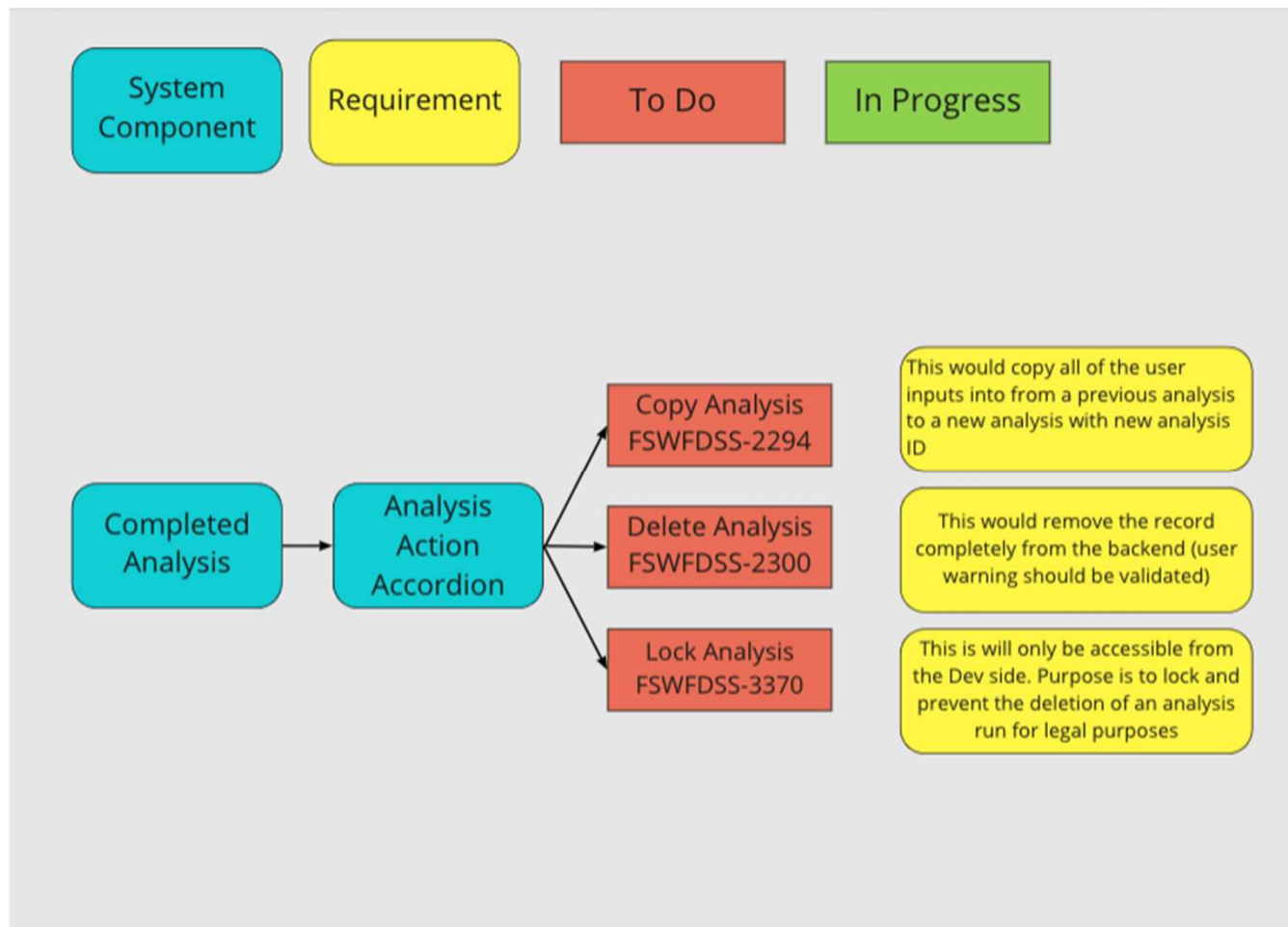
Save

CLOSE

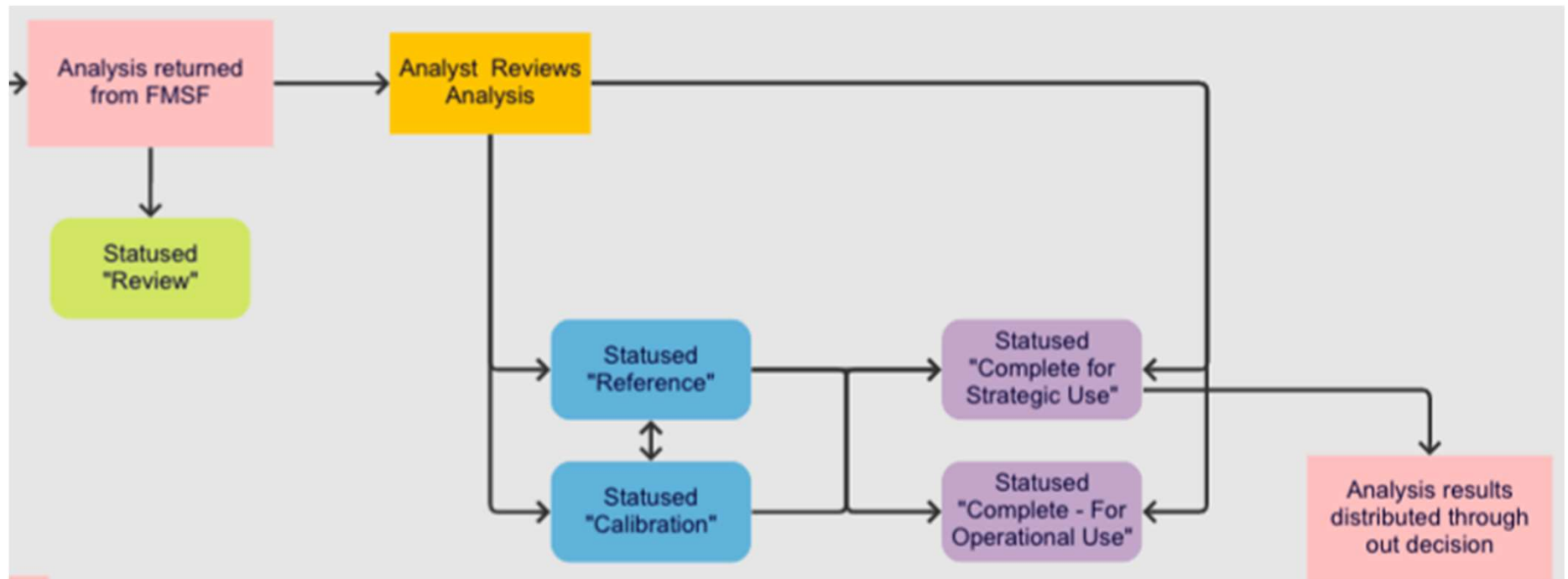
WFDSS Next Gen – Analysis Status Flow – A “Processing” run can have 3 status outcomes: “Terminated”, “Failed” or “Review”. The “Terminated” and “Failed” runs can be copied to do over. They can no longer be “returned to Assigned”. Runs that have completed results will show as “Review” when returned from the Fire Modeling Service Framework (FMSF).



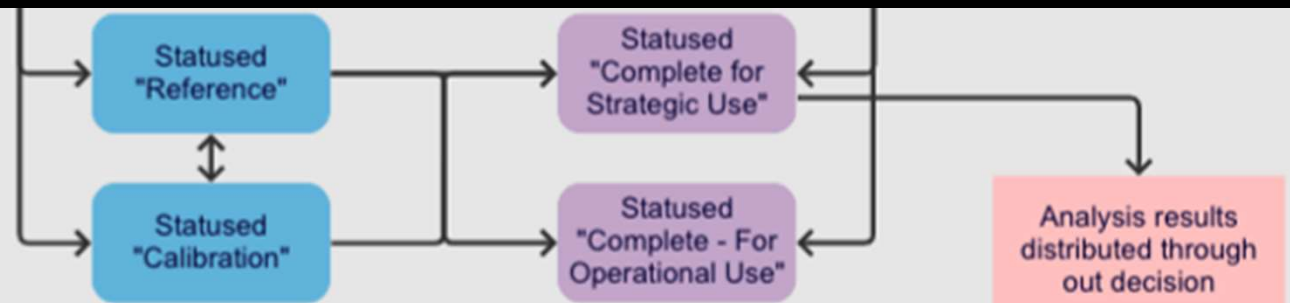
WFDSS Next Gen – Analysis Actions – COPY, DELETE, LOCK



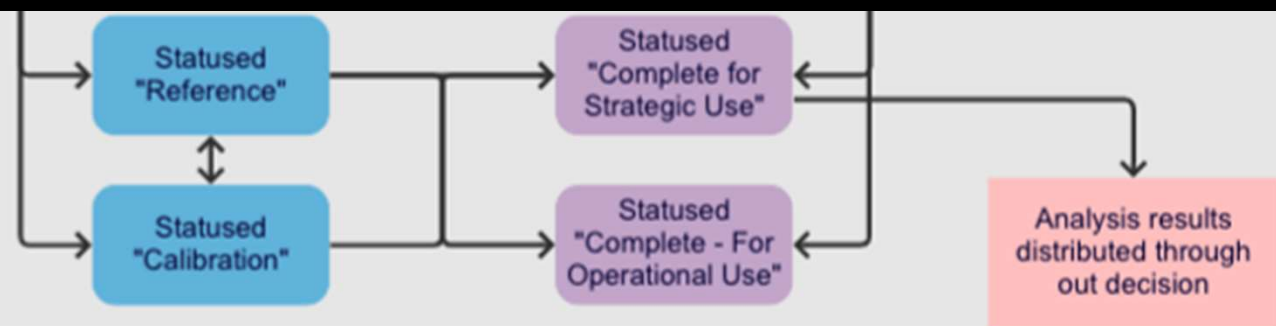
WFDSS Next Gen – Analysis Status Flow – The analysts reviews the runs and can assigned 1 of 4 different statuses: “Reference”, “Calibration”, Complete for Strategic Use”, or “Complete for operational use.



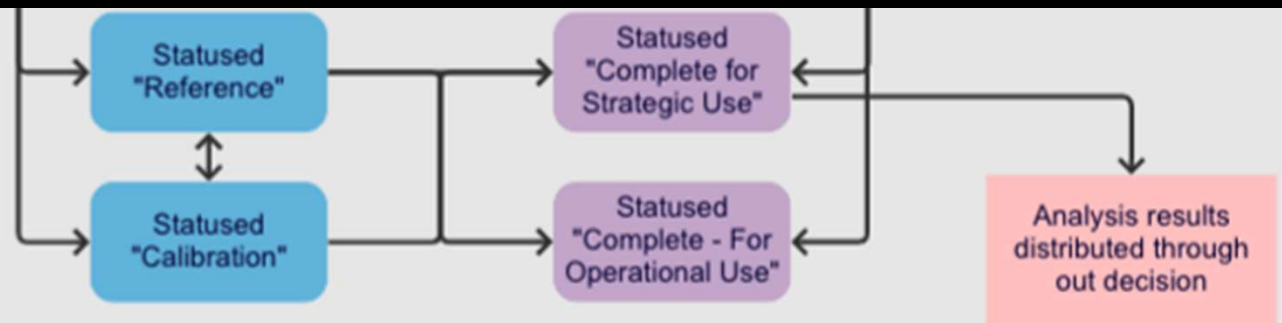
WFDSS Next Gen – “Reference” status is intended for runs that are used for notes to other analysts. They can be changed to either “Complete for Strategic Use” or “Complete for Operational Use”. They can also be copied. Results will be retained in the system.



WFDSS Next Gen – “Calibration” status is intended for runs that are used for calibration. They can be changed to either “Complete for Strategic Use” or “Complete for Operational Use”. They can also be copied. Results will be retained in the system.



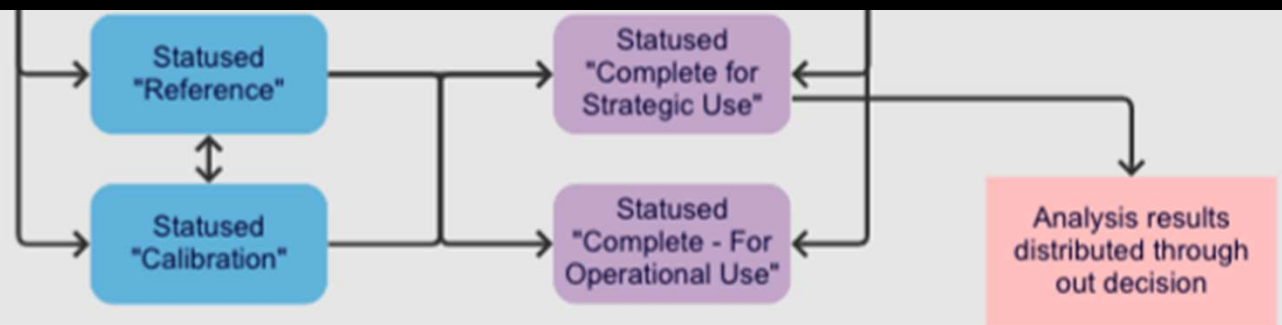
WFDSS Next Gen – “Complete for Strategic Use” status is for using results in the strategic incident decision.



- WFDSS Next Gen – “Complete for Strategic Use” status continued:

- Maintained in the system for NARA
- Can be changed to either “Complete for Strategic Use” or “Complete for Operational Use”
- Can be copied
- Can NOT revert to “Reference” or “Calibration”
- Will be distributed through out system for the incident decision

WFDSS Next Gen – “Complete for Operational Use” status is for operational decisions. This status should be used to keep runs that were used in the management of an incident but not in the decision.



- WFDSS Next Gen – “Complete for Operational Use” status continued:

- Maintained in the system for NARA
- Can be changed to either “Complete for Strategic Use” or “Complete for Operational Use”
- Can be copied
- Can NOT revert to “Reference” or “Calibration”
- Will NOT be put into a strategic decision
- Will be placed into a tactical plan – Future Development

WFDSS Next Gen – Analysis can be viewed from the Incident

The screenshot displays the WFDSS Next Gen web application interface. At the top, the navigation bar includes the WFDSS logo, a 'My Home' link, and a menu with 'Incidents', 'Analysis', 'Reports', 'Resources', and 'Contact Us'. On the right side of the navigation bar, there are notification and user icons, and a status indicator showing 'GA Preparedness Level: XX | National Preparedness Level: XX'.

The main header area features the incident title 'BOULDER MOUNTAIN' with a search icon and a link to the 'Incident Log'. Below this is a horizontal menu with icons for 'Incident Info', 'Analysis', 'Relative Risk', 'Strategy', 'Elaborations', 'OA', 'Rationale', 'Periodic Assessment', and 'MORs'. The 'Analysis' tab is currently selected.

The central part of the interface is a map showing the Boulder Mountain area. The map includes labels for 'Park Rapids', 'Crystal Falls', 'BLACKTAIL MOUNTAIN', 'Little Oreille National Wildlife Ref', 'BOULDER MOUNTAIN', 'CALISTO', 'Ruby', 'RUBY MOUNTAIN', 'Locke', and 'Jare'. A red outline highlights the Boulder Mountain area. The map scale is 1:144,440, and there is a 'double-click to select image' tooltip. The map is powered by Esri.

On the right side, there is a panel with tabs for 'Weather', 'Landscape', and 'Run/Results'. The 'Run/Results' tab is active, showing a 'Requested' section with expandable items: 'Run', 'Outputs', 'Statusing', and 'Actions'. Below these items are buttons for 'Copy', 'Delete', and 'Lock'. There is also a 'Results Notes' section with a text area. At the bottom right of the panel are 'SAVE' and 'CLOSE' buttons.

WFDSS Next Gen – Existing Analyses – Viewing existing analyses for incident.

WFDSS

[My Home](#)
[Incidents](#)
[Analysis](#)
[Reports](#)
[Resources](#)
[Contact Us](#)
GA Preparedness Level: XX | National Preparedness Level: XX

Blodgett Lake Incident Log

Incident Info
Analysis
Relative Risk
Strategy
Elaborations
OA
Rationale
Periodic Assessment
MORs

Map Scale 1:144,448

Esri, NASA, NGA, USGS | Esri, HERE, Garmin, SafeGraph, GeoTechnologies, Inc, METI/NASA, USGS, Bureau of Land Management, EPA, NPS, USDA

New Analysis
Existing Analyses

Existing analysis records for: BOULDER MOUNTAIN

[EXPORT](#) Filter by Analysis Name, Analyst Name, or Analysis Type

ANALYSIS NAME	ANALYSIS TYPE	Analyst/Requestor Name	STATUS	CREATED DATE/TIME ↓
Requested	FSPro	Wes Hall	Requested	9/20/2022, 08:33

Items per page: 10 1 - 1 of 1

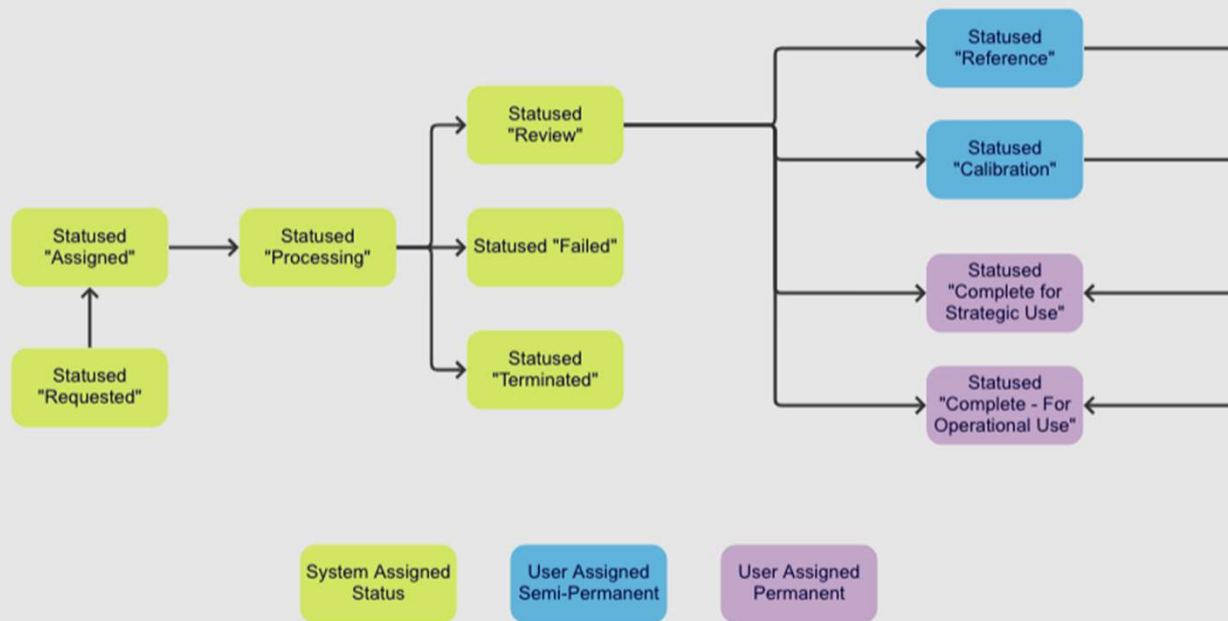
CLOSE

WFDSS Next Gen – Setting the Status – Users will be able to add notes when setting the status.

The screenshot displays the WFDSS Next Gen user interface. At the top, the navigation bar includes 'My Home', 'Incidents', 'Analysis', 'Reports', 'Resources', and 'Contact Us'. The current page is titled 'Slatkouka' and features a secondary navigation bar with tabs for 'Incident Info', 'Analysis', 'Relative Risk', 'Strategy', 'Elaborations', 'DA', 'Rationale', 'Periodic Assessment', and 'MOIs'. The main content area is split into two sections. On the left is a topographic map of the Slatkouka region, with a purple rectangular box highlighting a specific area. The map includes labels for 'Koyukuk River' and 'Slatkouka'. A coordinate box at the bottom left of the map shows '66° 25.793' - 152° 58.819'' and 'Map Scale 1:144,448'. On the right is a configuration panel for an analysis. The panel has a title '[ANALYSIS NAME]' and a 'Run' button. It contains several sections: 'Risk', 'Outputs', 'Monitoring', 'Status', 'Status Notes', 'Actions', and 'Results Notes'. The 'Monitoring' section is expanded, showing a box with the text 'Complete - For Strategic Use', 'Joe Cool', 'Analysis ID: 956443', 'Status Set: MM/DD/YYYY HHMM', and 'Expires: MM/DD/YYYY HHMM'. Below this, there is a 'Status' dropdown menu, an 'Expiration' field with a calendar icon, and a 'Does not Expire' checkbox. At the bottom of the panel are 'Save' and 'Cancel' buttons. A 'CLOSE' button is located at the bottom right of the entire interface.

WFDSS Next Gen – RECAP - Simplified Analysis Status Flow – There are 4 status choices.

Simplified Analysis Status Flow



WFDSS Next Gen –

- Please complete the user survey!!
- Your input is important!!